

## 11-4053: Polyclonal Antibody to CLEC8A

<b>Clonality :</b>	Polyclonal
<b>Application :</b>	WB
<b>Reactivity :</b>	Human
<b>Gene :</b>	OLR1
<b>Gene ID :</b>	4973
<b>Uniprot ID :</b>	P78380
<b>Format :</b>	Purified
<b>Alternative Name :</b>	OLR1,CLEC8A,LOX1
<b>Isotype :</b>	Rabbit IgG
<b>Immunogen Information :</b>	A partial length recombinant CLEC8A protein (amino acids 1-200) was used as the immunogen for this antibody.

### Description

CLEC8A or OLR1 is a member of C-type lectin super family. It is the receptor that mediates the recognition and degradation of low density lipoprotein (oxLDL) by vascular endothelial cells. OxLDL is a marker of atherosclerosis that induces vascular endothelial cell activation and dysfunction, resulting in inflammatory responses, pro-oxidative conditions and apoptosis. OLR1 ligation with oxLDL induces the activation of NF-kappa-B through an increased production of intracellular reactive oxygen and a variety of pro-atherogenic cellular responses including a reduction of nitric oxide (NO) release, Monocyte adhesion and apoptosis. OLR1 is highly expressed in vascular rich organs, like placenta, liver, lungs and brain. CLEC8A has been reported to be associated with diseases, like atherosclerosis, myocardial infarction and Alzheimer's disease. Alternative splicing produces three isoforms of CLEC8A or OLR1 whose exact function is yet to be ascertained.

### Product Info

<b>Amount :</b>	25 µg / 100 µg
<b>Purification :</b>	Protein A Chromatography
<b>Content :</b>	25 µg in 50 µl/100 µg in 200 µl PBS containing 0.05% BSA and 0.05% sodium azide. Sodium azide is highly toxic.
<b>Storage condition :</b>	Store the antibody at 4°C, stable for 6 months. For long-term storage, store at -20°C. Avoid repeated freeze and thaw cycles.

### Application Note

Western blot analysis: 5-6 µg/ml

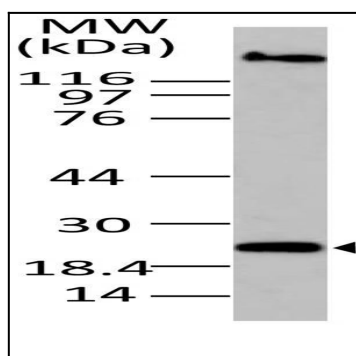


Fig-1: Western blot analysis of CLEC8A. Anti-CLEC8A antibody (11-4053) was used at 5 µg/ml on Brain lysate.