

## 11-4062: Polyclonal Antibody to SGK1

<b>Clonality :</b>	Polyclonal
<b>Application :</b>	WB
<b>Reactivity :</b>	Human
<b>Gene :</b>	SGK1
<b>Gene ID :</b>	6446
<b>Uniprot ID :</b>	O00141
<b>Format :</b>	Purified
<b>Alternative Name :</b>	SGK1,SGK
<b>Isotype :</b>	Rabbit IgG
<b>Immunogen Information :</b>	A partial length recombinant SGK1 protein (amino acids 194-431) was used as the immunogen for this antibody.

### Description

SGK1 (serum/glucocorticoid regulated kinase 1) is a serine/threonine protein kinase which is involved in the regulation of a wide variety of ion channels, membrane transporters, cellular enzymes, transcription factors, neuronal excitability, cell growth, proliferation, survival, migration and apoptosis and has important role in cellular stress response. It exists in 5 isoforms. SGK1 is highly expressed in pancreas, followed by placenta, kidney and lung. Isoform 2 is strongly expressed in brain and pancreas, weaker in heart, placenta, lung, liver and skeletal muscle.

### Product Info

<b>Amount :</b>	25 µg / 100 µg
<b>Purification :</b>	Protein A Chromatography
<b>Content :</b>	25 µg in 50 µl/100 µg in 200 µl PBS containing 0.05% BSA and 0.05% sodium azide. Sodium azide is highly toxic.
<b>Storage condition :</b>	Store the antibody at 4°C, stable for 6 months. For long-term storage, store at -20°C. Avoid repeated freeze and thaw cycles.

### Application Note

Western blot analysis: 1-3 µg/ml

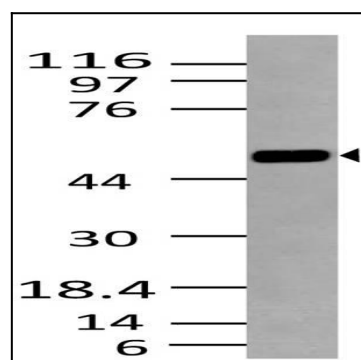


Fig-1: Western blot analysis of SGK1 . Anti-SGK1 antibody (11-4062) was used at 1 µg/ml on Pancrease lysate.