

11-4050: Polyclonal Antibody to CLEC4E

| | |
|--------------------------------|---|
| Clonality : | Polyclonal |
| Application : | WB |
| Reactivity : | Human |
| Gene : | CLEC4E |
| Gene ID : | 26253 |
| Uniprot ID : | Q9ULY5 |
| Format : | Purified |
| Alternative Name : | CLEC4E,CLECSF9,MINCLE,UNQ218/PRO244 |
| Isotype : | Rabbit IgG |
| Immunogen Information : | Full length recombinant CLEC4E protein was used as the immunogen for this antibody. |

Description

CLEC4E (C-type lectin domain family 4, member E) is a member of the C-type lectin/C-type lectin-like domain (CTL/CTLD) superfamily. CLEC4E has diverse functions, such as recognition of pathogenic fungi like *Candida albicans*, recognition of a nuclear protein (SAP130), that is released by dead or dying cell. CLEC4E is also involved in signal transduction through an ITAM-containing adapter protein. CLEC4E is mainly expressed in bladder, blood, bone, etc.

Product Info

| | |
|----------------------------|---|
| Amount : | 25 µg / 100 µg |
| Purification : | Protein A Chromatography |
| Content : | 25 µg in 50 µl/100 µg in 200 µl PBS containing 0.05% BSA and 0.05% sodium azide. Sodium azide is highly toxic. |
| Storage condition : | Store the antibody at 4°C, stable for 6 months. For long-term storage, store at -20°C. Avoid repeated freeze and thaw cycles. |

Application Note

Western blot analysis: 2-4 Åµg/ml

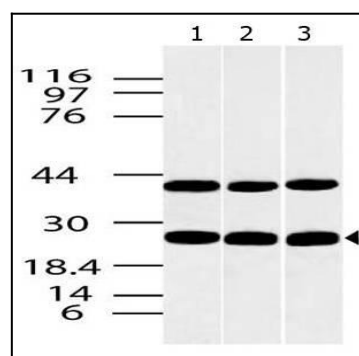


Fig-1: Western blot analysis of CLEC4E. Anti-CLEC4E antibody (11-4050) was used at 2 µg/ml on 1) Hela, 2) A431 and 3) A375 lysates.