

## 10-4013: Monoclonal Antibody to Dectin-2 (Clone: ABM2H28)

<b>Clonality :</b>	Monoclonal
<b>Clone Name :</b>	ABM2H28
<b>Application :</b>	IHC,FACS,WB
<b>Reactivity :</b>	Mouse,Human
<b>Gene :</b>	CLEC6A
<b>Gene ID :</b>	93978
<b>Uniprot ID :</b>	Q6EIG7
<b>Format :</b>	Purified
<b>Alternative Name :</b>	CLEC6A,CLECSF10,DECTIN2
<b>Isotype :</b>	Mouse IgG2a Kappa
<b>Immunogen Information :</b>	A partial length recombinant Dectin-2 protein (amino acids 70-230) was used as the immunogen for this antibody.

### Description

Dectin-2 (C-type lectin domain family 6 member A) is a type II membrane receptor with an extracellular C-type lectin-like domain fold. Dectin-2 plays an important role in the host defense against *C. albicans* infection by inducing TH17 cell differentiation. It binds high-mannose carbohydrates in a Ca(2+)-dependent manner. In Dectin-2 glycosylation occurs at Asn131, Asn170. Dectin-2 has 2 isoforms produced by alternative splicing. Dectin-2 is strongly expressed in monocytes and weakly in B-cells and also expressed in spleen, tonsils, lymph node, lungs, leukocytes, dendritic cells and bone marrow.

### Product Info

<b>Amount :</b>	25 µg / 100 µg
<b>Purification :</b>	Protein G Chromatography
<b>Content :</b>	25 µg in 50 µl/100 µg in 200 µl PBS containing 0.05% BSA and 0.05% sodium azide. Sodium azide is highly toxic.
<b>Storage condition :</b>	Store the antibody at 4°C, stable for 6 months. For long-term storage, store at -20°C. Avoid repeated freeze and thaw cycles.

### Application Note

Western blot analysis: 2-4 µg/ml, FACS analysis: 0.5 µg/10<sup>6</sup> cells, Immunohistochemical analysis: 5 µg/ml

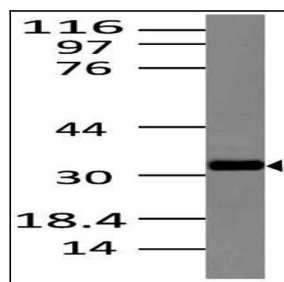


Fig-1: Western blot analysis of Dectin 2 Anti- Dectin 2 antibody (Clone: ABM2H28) was used at 2 µg/ml on Raw lysate.

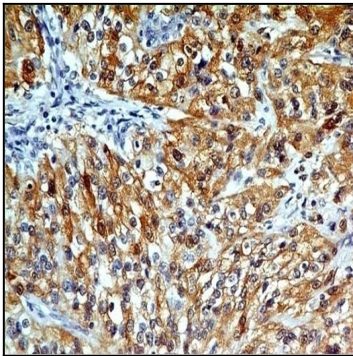


Fig-2 : Immunohistochemical analysis of Dectin-2 in Renal Cell Carcinoma using Dectin-2 antibody (Clone: ABM2H28) at 5 µg/ml.

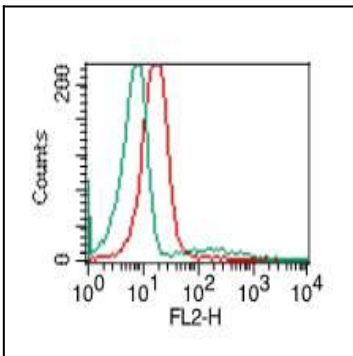


Fig-3: Intracellular flow analysis of Dectin-2 in human PBMC (Lymphocytes) using 0.5 µg/10<sup>6</sup> cells of Dectin-2 antibody (Clone: ABM2H28). Green represents isotype control; red represents anti-Dectin-2 antibody. Goat anti-mouse PE conjugate was used as secondary.