

## 11-4029: Polyclonal Antibody to RAGE

<b>Clonality :</b>	Polyclonal
<b>Application :</b>	WB
<b>Reactivity :</b>	Human
<b>Gene :</b>	AGER
<b>Gene ID :</b>	177
<b>Uniprot ID :</b>	Q15109
<b>Format :</b>	Purified
<b>Alternative Name :</b>	AGER,RAGE
<b>Isotype :</b>	Rabbit IgG
<b>Immunogen Information :</b>	A partial length recombinant RAGE protein (amino acids 1-280) was used as the immunogen for this antibody.

### Description

RAGE (Advanced glycosylation end product-specific receptor) is a member of immunoglobulin superfamily with multiple isoforms being located on the membrane of endothelial cells. RAGE acts transporter of amyloid beta peptide across the blood brain barrier. It has also been reported that RAGE is overexpressed in Alzheimer disease. RAGE is also involved in vascular inflammation in atherosclerosis, type 2 diabetes mellitus. High levels of RAGE protein is found in brain tissue.

### Product Info

<b>Amount :</b>	25 µg / 100 µg
<b>Purification :</b>	Protein A Chromatography
<b>Content :</b>	25 µg in 50 µl/100 µg in 200 µl PBS containing 0.05% BSA and 0.05% sodium azide. Sodium azide is highly toxic.
<b>Storage condition :</b>	Store the antibody at 4°C, stable for 6 months. For long-term storage, store at -20°C. Avoid repeated freeze and thaw cycles.

### Application Note

Western blot analysis: 1-2 µg/ml

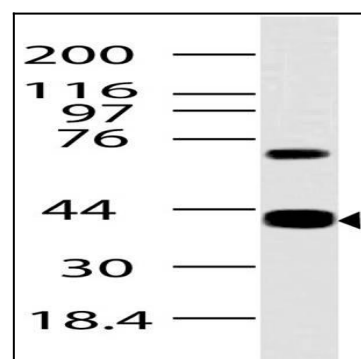


Fig-1: Western blot analysis of RAGE. Anti-RAGE antibody (11-4029) was used at 2 µg/ml on Liver lysate.