

## 11-12029: Polyclonal Antibody to GLI1

<b>Clonality :</b>	Polyclonal
<b>Application :</b>	WB
<b>Reactivity :</b>	Human
<b>Gene :</b>	GLI1
<b>Gene ID :</b>	2735
<b>Uniprot ID :</b>	PO8151
<b>Format :</b>	Purified
<b>Alternative Name :</b>	GLI1, GLI
<b>Isotype :</b>	Rabbit IgG
<b>Immunogen Information :</b>	A partial length recombinant GLI1 protein (amino acids 881-1,000) was used as the immunogen for this antibody.

### Description

GLI1 or Zinc finger protein GLI1 is a member of the Kruppel family of zinc finger proteins and acts as a transcriptional activator of the sonic hedgehog signal transduction cascade. GLI1 plays important role in developmental processes and also regulates stem cell proliferation. GLI1 has three isoforms (117, 113 and 104 kDa). GLI1 is associated in diseases like neuroblastoma and ameloblastoma. GLI1 is mainly expressed in testis, myometrium and fallopian tube.

### Product Info

<b>Amount :</b>	25 µg / 100 µg
<b>Purification :</b>	Protein A Chromatography
<b>Content :</b>	25 µg in 50 µl/100 µg in 200 µl PBS containing 0.05% BSA and 0.05% sodium azide. Sodium azide is highly toxic.
<b>Storage condition :</b>	Store the antibody at 4°C, stable for 6 months. For long-term storage, store at -20°C. Avoid repeated freeze and thaw cycles.

### Application Note

Western blot analysis: 2-4 µg/ml

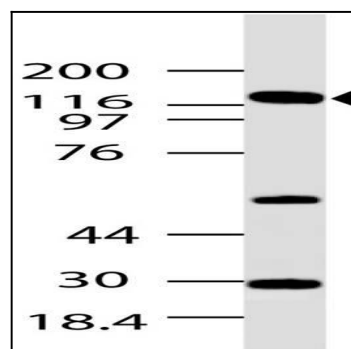


Fig-1: Western blot analysis of GLI1. Anti-GLI1 antibody (11-12029) was used at 4 µg/ml on Brain lysate.