

## 11-8059: Polyclonal Antibody to Beta-arrestin 1

<b>Clonality :</b>	Polyclonal
<b>Application :</b>	WB
<b>Reactivity :</b>	Human
<b>Gene :</b>	ARRB1
<b>Gene ID :</b>	408
<b>Uniprot ID :</b>	P49407
<b>Format :</b>	Purified
<b>Alternative Name :</b>	ARRB1,ARR1
<b>Isotype :</b>	Rabbit IgG
<b>Immunogen Information :</b>	A partial length recombinant Beta-arrestin 1 protein (amino acids 150-318) was used as the immunogen for this antibody.

### Description

Beta-arrestin 1, a member of arrestin family, is a cofactor of beta-adrenergic receptor kinase (BARK) in beta-adrenergic receptor desensitization and resensitization process. Beta-arrestin 1 acts as endocytic adapter for internalization of many G-protein coupled receptors. Beta-arrestin 1 is also associated with many other cellular processes like ubiquitination and down-regulation of the insulin-like growth factor-1 receptor, synaptic transmission in photoreceptor cells, working as a scaffold protein in G-protein coupled receptor signaling pathways. Two isoforms of beta-arrestin 1 have been identified, isoform 1 (47 kDa) and isoform 2 (46 kDa). Beta-arrestin 1 is highly expressed in liver, kidney, lungs and testes.

### Product Info

<b>Amount :</b>	25 µg / 100 µg
<b>Purification :</b>	Protein A Chromatography
<b>Content :</b>	25 µg in 50 µl/100 µg in 200 µl PBS containing 0.05% BSA and 0.05% sodium azide. Sodium azide is highly toxic.
<b>Storage condition :</b>	Store the antibody at 4°C, stable for 6 months. For long-term storage, store at -20°C. Avoid repeated freeze and thaw cycles.

### Application Note

Western blot analysis: 2-4 µg/ml

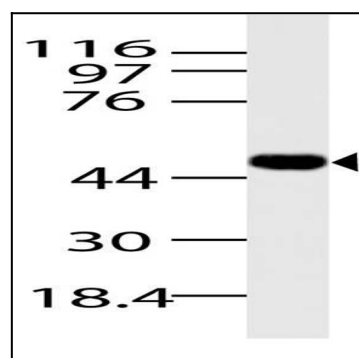


Fig-1: Western blot analysis of Beta-arrestin 1. Anti-Beta-arrestin 1 antibody (11-8059) was used at 4 µg/ml on Spleen lysate.