

## 11-8080: Polyclonal Antibody to Importin 7

<b>Clonality :</b>	Polyclonal
<b>Application :</b>	WB
<b>Reactivity :</b>	Human
<b>Gene :</b>	IPO7
<b>Gene ID :</b>	10527
<b>Uniprot ID :</b>	O95373
<b>Format :</b>	Purified
<b>Alternative Name :</b>	IPO7,RANBP7
<b>Isotype :</b>	Rabbit IgG
<b>Immunogen Information :</b>	A partial length recombinant Importin 7 protein (amino acids 1-322) was used as the immunogen for this antibody.

### Description

Importin 7 (IPO7) is a soluble nuclear transport factor that is required for efficient import. It mediates transport of hTERT into the nucleus. Efficient transport also requires the cytoplasmic nucleoporin Nup358, which was previously implicated in nuclear import of a subset of proteins. Importin 7 plays an important role in nuclear protein import either by acting as autonomous nuclear transport receptor, or as an adapter like protein in association with the importin-beta subunit KPNB1. It serves itself as receptor for nuclear localization signals (NLS) and to promote translocation of import substrates through the nuclear pore complex (NPC) by an energy requiring, Ran-dependent mechanism.

### Product Info

<b>Amount :</b>	25 µg / 100 µg
<b>Purification :</b>	Protein A Chromatography
<b>Content :</b>	25 µg in 50 µl/100 µg in 200 µl PBS containing 0.05% BSA and 0.05% sodium azide. Sodium azide is highly toxic.
<b>Storage condition :</b>	Store the antibody at 4°C, stable for 6 months. For long-term storage, store at -20°C. Avoid repeated freeze and thaw cycles.

### Application Note

Western blot analysis: 1-2 Åµg/ml

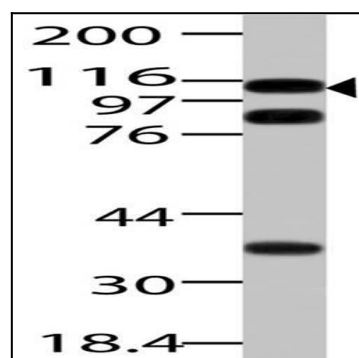


Fig-1: Western blot analysis of Importin 7. Anti-Importin 7 antibody (11-8080) was used at 2 µg/ml on Hela lysate.