

11-10008: Polyclonal Antibody to Formin-like protein 2

Clonality :	Polyclonal
Application :	WB
Reactivity :	Human
Gene :	FMNL2
Gene ID :	114793
Uniprot ID :	Q96PY5
Format :	Purified
Alternative Name :	Formin homology 2 domain-containing protein 2, FHOD2, KIAA1902
Isotype :	Rabbit IgG
Immunogen Information :	A partial length recombinant Formin-like protein 2 protein (amino acids 1-321) was used as the immunogen for this antibody.

Description

Formin-like protein 2/FHOD1 (formin homology 2 domain containing 1) acts as a capping and bundling protein. In cells, active FHOD1 stimulates the formation of ventral stress fibers. FHOD1 is mainly located at the intercalated disc, the special type of cell-cell contact between cardiomyocytes (25125170).FHOD1 promotes the formation of short actin filaments and transiently associates with transverse arcs, thus providing tight temporal and spatial control of the formation and turnover of transverse arcs into mature ventral stress fibers during dynamic cell behavior (24481812).

Product Info

Amount :	25 µg / 100 µg
Purification :	Protein A Chromatography
Content :	25 µg in 50 µl/100 µg in 200 µl PBS containing 0.05% BSA and 0.05% sodium azide. Sodium azide is highly toxic.
Storage condition :	Store the antibody at 4°C, stable for 6 months. For long-term storage, store at -20°C. Avoid repeated freeze and thaw cycles.

Application Note

Western blot analysis: 2-4 Åµg/ml

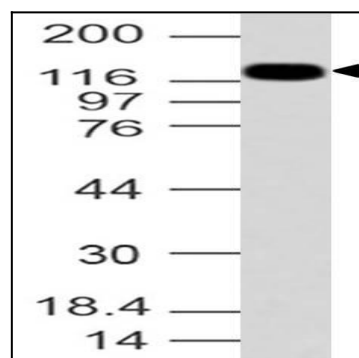


Fig-1: Western blot analysis of Formin-like protein 2. Anti-Formin-like protein 2 antibody (11-10008) was used at 4 µg/ml on HCT-116 lysate.