

11-1003: Polyclonal Antibody to CYP1B1

Clonality :	Polyclonal
Application :	WB
Reactivity :	Human
Gene :	CYP1B1
Gene ID :	1545
Uniprot ID :	Q16678
Format :	Purified
Alternative Name :	CYP1B1
Isotype :	Rabbit IgG
Immunogen Information :	A partial length recombinant CYP1B1 protein (amino acids 1-260) was used as the immunogen for this antibody.

Description

CYP1B1 (Cytochrome P450 1B1) belongs to the CYP450 superfamily of heme-binding mono-oxygenases which catalyze oxidation of various endogenous and exogenous substrates. The expression of Cyp1b1 plays an important role in the modulation of development and functions of the trabecular meshwork (TM). Mutations in Cyp1b1 found in patients with primary congenital glaucoma (PCG). It plays an important role in breast cancer development and progression by bioactivating endogenous estrogens and environmental carcinogens. It is over-expressed at the early stage of NNK-induced lung tumorigenesis.

Product Info

Amount :	25 µg / 100 µg
Purification :	Protein A Chromatography
Content :	25 µg in 50 µl/100 µg in 200 µl PBS containing 0.05% BSA and 0.05% sodium azide. Sodium azide is highly toxic.
Storage condition :	Store the antibody at 4°C, stable for 6 months. For long-term storage, store at -20°C. Avoid repeated freeze and thaw cycles.

Application Note

Western blot analysis: 2-4 µg/ml

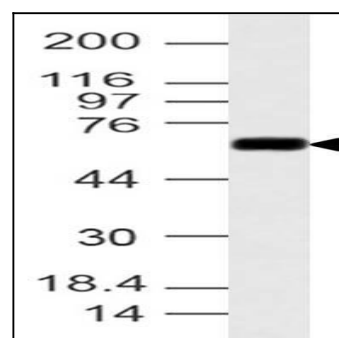


Fig-1: Western blot analysis of CYP1B1. Anti-CYP1B1 antibody (11-1003) was used at 4 µg/ml on A549 lysate.