

11-10017: Polyclonal Antibody to S1P3 receptor, Edg-3

| | |
|--------------------------------|---|
| Clonality : | Polyclonal |
| Application : | WB |
| Reactivity : | Human |
| Gene : | S1PR3 |
| Gene ID : | 1903 |
| Uniprot ID : | Q99500 |
| Format : | Purified |
| Alternative Name : | S1PR3,EDG3 |
| Isotype : | Rabbit IgG |
| Immunogen Information : | A partial length recombinant S1P3 receptor, Edg-3 protein (amino acids 80-350) was used as the immunogen for this antibody. |

Description

S1PR3 (sphingosine-1phosphate receptor3) is a vascular barrier regulatory member of the S1P family of receptors (S1PR15) and a critical signaling molecule mediating cell proliferation, adhesion, angiogenesis, and vascular permeability. In a nitrated form protein in plasma it is found as a biomarker in patients with ALI (acute lung injury). S1PR3 plays an important role in promoting pulmonary inflammation, disrupting cell-cell junctions, and increasing lung permeability and alveolar flooding during inflammation.

Product Info

| | |
|----------------------------|---|
| Amount : | 25 µg / 100 µg |
| Purification : | Protein A Chromatography |
| Content : | 25 µg in 50 µl/100 µg in 200 µl PBS containing 0.05% BSA and 0.05% sodium azide. Sodium azide is highly toxic. |
| Storage condition : | Store the antibody at 4°C, stable for 6 months. For long-term storage, store at -20°C. Avoid repeated freeze and thaw cycles. |

Application Note

Western blot analysis: 2-4 µg/ml

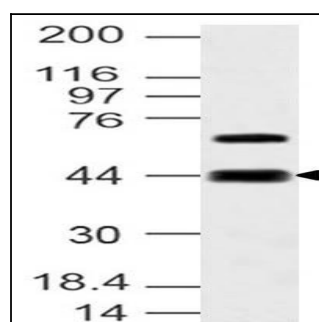


Fig-1: Western blot analysis of S1P3 receptor, Edg-3. Anti- S1P3 receptor, Edg-3 antibody (11-10017) was used at 4 µg/ml on Liver lysate.