

## 11-10027: Polyclonal Antibody to PER1

<b>Clonality :</b>	Polyclonal
<b>Application :</b>	WB
<b>Reactivity :</b>	Human
<b>Gene :</b>	PER1
<b>Gene ID :</b>	5187
<b>Uniprot ID :</b>	O15534
<b>Format :</b>	Purified
<b>Alternative Name :</b>	Circadian clock protein PERIOD 1, Circadian pacemaker protein Rigi, KIAA0482, PER, RIGUI
<b>Isotype :</b>	Rabbit IgG
<b>Immunogen Information :</b>	A partial length recombinant PER1 protein (amino acids 1000-1200) was used as the immunogen for this antibody.

### Description

PER1 (period circadian clock 1) is an important core clock protein and members of the circadian family of proteins, involved in the regulation of normal cell proliferations and physiological rhythms of human beings. It is expressed in a circadian pattern in the suprachiasmatic nucleus, the primary circadian pacemaker in the mammalian brain and its function is to regulate physiological rhythms, cell cycle and DNA damage response of normal living subjects. Aberrant expressions and altered rhythms of PER1 are highly linked to the carcinogenesis and development of malignant tumors, such as prostate cancer, colon cancer, leukocythemia and breast cancer.

### Product Info

<b>Amount :</b>	25 µg / 100 µg
<b>Purification :</b>	Protein A Chromatography
<b>Content :</b>	25 µg in 50 µl/100 µg in 200 µl PBS containing 0.05% BSA and 0.05% sodium azide. Sodium azide is highly toxic.
<b>Storage condition :</b>	Store the antibody at 4°C, stable for 6 months. For long-term storage, store at -20°C. Avoid repeated freeze and thaw cycles.

### Application Note

Western blot analysis: 2-4 µg/ml

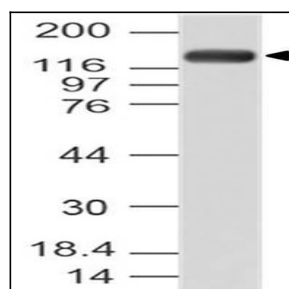


Fig-1: Western blot analysis of PER1. Anti- PER1 antibody (11-10027) was used at 4 µg/ml on Hela lysate.