

11-10018: Polyclonal Antibody to UBE1L2/MOP-4

Clonality :	Polyclonal
Application :	WB
Reactivity :	Human
Gene :	UBA6
Gene ID :	55236
Uniprot ID :	A0AVT1
Format :	Purified
Alternative Name :	UBA6,MOP4,UBE1L2
Isotype :	Rabbit IgG
Immunogen Information :	A partial length recombinant UBE1L2 protein (amino acids 710-955) was used as the immunogen for this antibody.

Description

Uba6/UBE1L2/MOP-4 is an ubiquitin-specific E1 type enzyme, homolog of the ubiquitin-activating enzyme, Uba1, which activates two ubiquitin-like proteins (UBLs), ubiquitin and FAT10. Some recent experiments suggest a testis-specific function of UBE1L2. UBE1L2 forms a thioester with FAT10 and this reaction requires the active-site cysteine of UBE1L2 and the C-terminal diglycine motif of FAT10. It can transfer ubiquitin to Ubc5 and Ubc13, suggesting its specialized role in ubiquitination reactions.

Product Info

Amount :	25 µg / 100 µg
Purification :	Protein A Chromatography
Content :	25 µg in 50 µl/100 µg in 200 µl PBS containing 0.05% BSA and 0.05% sodium azide. Sodium azide is highly toxic.
Storage condition :	Store the antibody at 4°C, stable for 6 months. For long-term storage, store at -20°C. Avoid repeated freeze and thaw cycles.

Application Note

Western blot analysis: 2-4 µg/ml

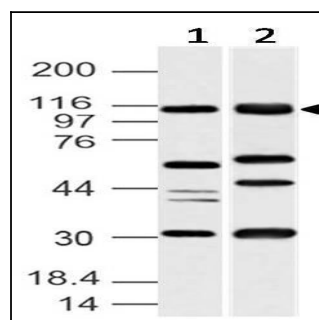


Fig-1: Western blot analysis of UBE1L2/MOP-4. Anti-UBE1L2/MOP-4 antibody (11-10018) was used at 4 µg/ml on (1) Jurkat and (2) K562 lysates.