

11-4045: Polyclonal Antibody to CLEC12A/MICL

| | |
|--------------------------------|--|
| Clonality : | Polyclonal |
| Application : | WB |
| Reactivity : | Human |
| Gene : | CLEC12A |
| Gene ID : | 160364 |
| Uniprot ID : | Q5QGZ9 |
| Format : | Purified |
| Alternative Name : | CLEC12A, CLL1, DCAL2, MICL |
| Isotype : | Rabbit IgG |
| Immunogen Information : | A partial length recombinant CLEC12A/MICL protein (amino acids 150-250) was used as the immunogen for this antibody. |

Product Info

| | |
|----------------------------|---|
| Amount : | 25 µg / 100 µg |
| Purification : | Protein A Chromatography |
| Content : | 25 µg in 50 µl/100 µg in 200 µl PBS containing 0.05% BSA and 0.05% sodium azide. Sodium azide is highly toxic. |
| Storage condition : | Store the antibody at 4°C, stable for 6 months. For long-term storage, store at -20°C. Avoid repeated freeze and thaw cycles. |

Application Note

Western blot analysis: 2-4 Åµg/ml

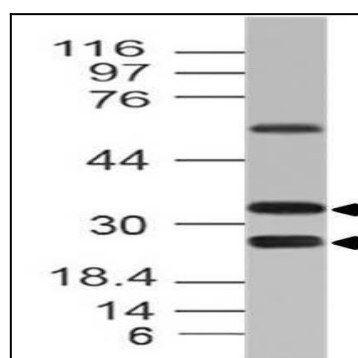


Fig-1: Western blot analysis of CLEC12A. Anti-CLEC12A antibody (11-4045) was used at 2 µg/ml on Daudi lysate.