

## 11-7545: Polyclonal Antibody to E Cadherin

|                                |                                                                                                                     |
|--------------------------------|---------------------------------------------------------------------------------------------------------------------|
| <b>Clonality :</b>             | Polyclonal                                                                                                          |
| <b>Application :</b>           | WB                                                                                                                  |
| <b>Reactivity :</b>            | Human                                                                                                               |
| <b>Gene :</b>                  | CDH1                                                                                                                |
| <b>Gene ID :</b>               | 999                                                                                                                 |
| <b>Uniprot ID :</b>            | P12830                                                                                                              |
| <b>Format :</b>                | Purified                                                                                                            |
| <b>Alternative Name :</b>      | CDH1,CDHE,UVO                                                                                                       |
| <b>Isotype :</b>               | Rabbit IgG                                                                                                          |
| <b>Immunogen Information :</b> | A partial length recombinant E-cadherin protein (amino acids 438-556) was used as the immunogen for this antibody . |

### Description

E-cadherin is a calcium-regulated adhesion molecule expressed in most normal epithelial tissues. It is localized on the surfaces of epithelial cells in regions of cell-cell contact known as adherens junctions. The E-cadherin gene is located on chromosome 16q22.1. E-cadherin is associated with gland formation, stratification, and epithelial polarization. Besides its role in normal cells, this highly conserved gene can play a major role in malignant cell transformation, and especially in tumor development and progression. Selective loss of E-cadherin can cause dedifferentiation and invasiveness in human carcinomas, leading E-cadherin to be classified as a tumor suppressor.

### Product Info

|                            |                                                                                                                               |
|----------------------------|-------------------------------------------------------------------------------------------------------------------------------|
| <b>Amount :</b>            | 25 µg / 100 µg                                                                                                                |
| <b>Purification :</b>      | Protein A Chromatography                                                                                                      |
| <b>Content :</b>           | 25 µg in 50 µl/100 µg in 200 µl PBS containing 0.05% BSA and 0.05% sodium azide. Sodium azide is highly toxic.                |
| <b>Storage condition :</b> | Store the antibody at 4°C; stable for 6 months. For long-term storage; store at -20°C. Avoid repeated freeze and thaw cycles. |

### Application Note

Western blot analysis: 2-4 µg/ml

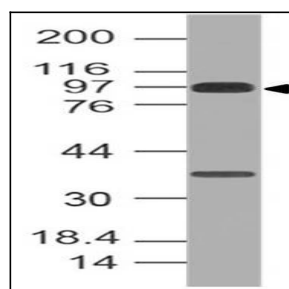


Fig-1: Expression analysis of E Cadherin. Anti-E Cadherin antibody (11-7545) was used at 2 µg/ml on h Stomach lysate.