

## 11-7544: Polyclonal Antibody to CELA3B

<b>Clonality :</b>	Polyclonal
<b>Application :</b>	WB
<b>Reactivity :</b>	Human
<b>Gene :</b>	CELA3B
<b>Gene ID :</b>	23436
<b>Uniprot ID :</b>	P08861
<b>Format :</b>	Purified
<b>Alternative Name :</b>	CELA3B,ELA3B
<b>Isotype :</b>	Rabbit IgG
<b>Immunogen Information :</b>	A partial length recombinant CELA3b protein (amino acids 18-227) was used as the immunogen for this antibody.

### Description

CELA3B (chymotrypsin-like elastase family, member 3B) is a specific human protease synthesised by the acinar cells. It is a serine endopeptidase, a specific type of protease that has the amino acid serine at its active site. CELA3B is stable, unaffected by exogenous pancreatic enzyme treatment, and correlates well with stimulated pancreatic function tests. It is unique in its ability to hydrolyze elastin, a fibrous and insoluble protein in connective tissue.

### Product Info

<b>Amount :</b>	25 µg / 100 µg
<b>Purification :</b>	Protein A Chromatography
<b>Content :</b>	25 µg in 50 µl/100 µg in 200 µl PBS containing 0.05% BSA and 0.05% sodium azide. Sodium azide is highly toxic.
<b>Storage condition :</b>	Store the antibody at 4°C; stable for 6 months. For long-term storage; store at -20°C. Avoid repeated freeze and thaw cycles.

### Application Note

Western blot analysis: 2-4 µg/ml

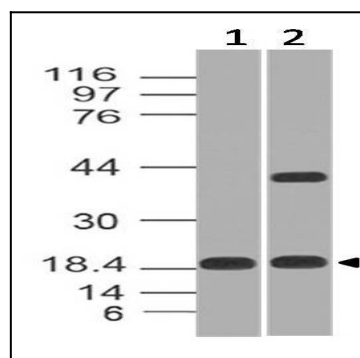


Fig-1: Expression analysis of CELA3B. Anti-CELA3B antibody (11-7544) was used at 2 µg/ml on (1) Recombinant and (2) SW1990 lysates.