

11-7543: Polyclonal Antibody to PD-L1

Clonality :	Polyclonal
Application :	WB
Reactivity :	Human
Gene :	CD274
Gene ID :	29126
Uniprot ID :	Q9NZQ7
Format :	Purified
Alternative Name :	CD274,B7H1,PDCD1L1,PDCD1LG1,PDL1
Isotype :	Rabbit IgG
Immunogen Information :	A partial length recombinant PDL1 protein (amino acids 18-227) was used as the immunogen for this antibody.

Description

Programmed death ligand 1/PD-L1 (also called B7-H1 and CD274) is a T cell inhibitory molecule that is expressed on antigen presenting cells (APC) leading to T cell anergy and/or apoptosis upon ligation to its receptor, programmed death-1 (PD-1, CD279) on T cells. PD-L1 is expressed on tumor cells of a subset of breast cancer patients. It could also induce EMT and enhance RCC cell cancer stemness through up-regulation of SREBP-1c. Blocking the immunosuppressive PD-1/PD-L1 pathway has antitumor activity in multiple cancer types, and PD-L1 expression on tumor cells and infiltrating myeloid cells correlates with the likelihood of response.

Product Info

Amount :	25 µg / 100 µg
Purification :	Protein A Chromatography
Content :	25 µg in 50 µl/100 µg in 200 µl PBS containing 0.05% BSA and 0.05% sodium azide. Sodium azide is highly toxic.
Storage condition :	Store the antibody at 4°C; stable for 6 months. For long-term storage; store at -20°C. Avoid repeated freeze and thaw cycles.

Application Note

Western blot analysis: 2-4 µg/ml

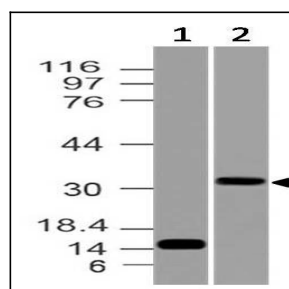


Fig-1: Expression analysis of PD-L1. Anti-PD-L1 antibody (11-7543) was used at 2 µg/ml on (1) Recombinant and (2) Raji lysates