

11-7541: Polyclonal Antibody to Calretinin

| | |
|--------------------------------|--|
| Clonality : | Polyclonal |
| Application : | WB |
| Reactivity : | Human |
| Gene : | CALB2 |
| Gene ID : | 794 |
| Uniprot ID : | P22676 |
| Format : | Purified |
| Alternative Name : | CALB2,CAB29 |
| Isotype : | Rabbit IgG |
| Immunogen Information : | A partial length recombinant Calretinin protein (amino acids 4-238) was used as the immunogen for this antibody. |

Description

Calretinin is a 29-kD intracellular, vitamin D-dependent calcium binding protein that likely has multiple functional roles including intracellular calcium buffering and message targeting. This protein is a member of the EF-hand family of calcium-binding proteins and first identified in the central nervous system. It has also been identified in a wide variety of non-neural cells, both neoplastic and non-neoplastic. In the oncologic arena calretinin is most commonly used as part of a panel in the separation of pleural mesothelioma from poorly differentiated pulmonary adenocarcinomas. While in most cases highly sensitive and specific for mesothelial origin, calretinin positivity has been reported in carcinomas arising in a myriad of other tissues including ovary, testis, adrenal cortex, colon, breast, sinonasal tract, thymus, skin and even soft tissue.

Product Info

| | |
|----------------------------|---|
| Amount : | 25 µg / 100 µg |
| Purification : | Protein A Chromatography |
| Content : | 25 µg in 50 µl/100 µg in 200 µl PBS containing 0.05% BSA and 0.05% sodium azide. Sodium azide is highly toxic. |
| Storage condition : | Store the antibody at 4°C; stable for 6 months. For long-term storage; store at -20°C. Avoid repeated freeze and thaw cycles. |

Application Note

Western blot analysis: 1-2 Åµg/ml

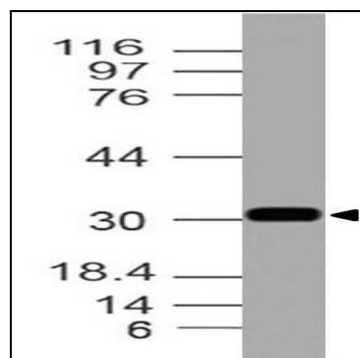


Fig-1: Expression analysis of Calretinin. Anti-Calretinin antibody (11-7541) was used at 1 µg/ml on h Brain lysate.