

11-7540: Polyclonal Antibody to CD10

Clonality :	Polyclonal
Application :	WB
Reactivity :	Human
Gene :	MME
Gene ID :	4311
Uniprot ID :	P08473
Format :	Purified
Alternative Name :	MME,EPN
Isotype :	Rabbit IgG
Immunogen Information :	A partial length recombinant CD10 protein (amino acids 282-496) was used as the immunogen for this antibody.

Description

CD10 is a membrane-associated neutral peptidase, also known as neprilysin, enkephalinase, common acute lymphoblastic leukemia antigen, and neutral endopeptidase. It acts as a cell surface enzyme with neutral metalloendopeptidase activity, is a marker for intestinal epithelial brush border. It is also present in normal bile ducts and gallbladder epithelia but is absent in cholangiocarcinomas.

Product Info

Amount :	25 µg / 100 µg
Purification :	Protein A Chromatography
Content :	25 µg in 50 µl/100 µg in 200 µl PBS containing 0.05% BSA and 0.05% sodium azide. Sodium azide is highly toxic.
Storage condition :	Store the antibody at 4°C; stable for 6 months. For long-term storage; store at -20°C. Avoid repeated freeze and thaw cycles.

Application Note

Western blot analysis: 2-4 Åµg/ml

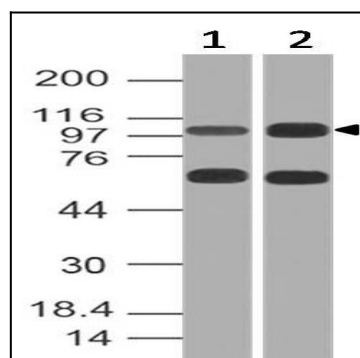


Fig-1: Expression analysis of CD10. Anti-CD10 antibody (11-7540) was used at 2 µg/ml on (1) Jurkat and (2) Raji lysates.