

## 11-3028: Polyclonal Antibody to IMPDHII

<b>Clonality :</b>	Polyclonal
<b>Application :</b>	WB
<b>Reactivity :</b>	Human
<b>Gene :</b>	IMPDH2
<b>Gene ID :</b>	3615
<b>Uniprot ID :</b>	P12268
<b>Format :</b>	Purified
<b>Alternative Name :</b>	IMPDH2, IMPD2
<b>Isotype :</b>	Rabbit IgG
<b>Immunogen Information :</b>	A partial length recombinant IMPDHII protein (amino acids 86-291) was used as the immunogen for this antibody.

### Description

Human type II inosine monophosphate dehydrogenase (IMPDHII) is a key enzyme in the purine nucleotide biosynthetic pathway and constitutes a pivotal biological target for immunosuppressant and antiviral drugs. It is linked to cell growth, differentiation, and malignant transformation. IMPDHII also plays an important role in the negative regulation of TLR2 signaling by modulating PI3K activity. Indeed, IMPDHII increases the phosphatase activity of SHP1, which participates in the inactivation of PI3K. Enhanced expression of IMPDHII promotes the tumor metastasis and the advanced tumor progression in patients with prostate cancer.

### Product Info

<b>Amount :</b>	25 µg / 100 µg
<b>Purification :</b>	Protein A Chromatography
<b>Content :</b>	25 µg in 50 µl/100 µg in 200 µl PBS containing 0.05% BSA and 0.05% sodium azide. Sodium azide is highly toxic.
<b>Storage condition :</b>	Store the antibody at 4°C; stable for 6 months. For long-term storage; store at -20°C. Avoid repeated freeze and thaw cycles.

### Application Note

Western blot analysis: 1-2 µg/ml

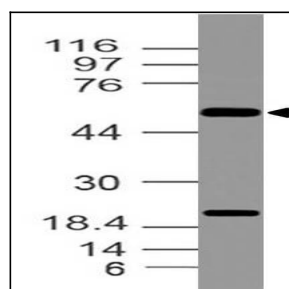


Fig-1: Western blot analysis of IMPDHII. Anti-IMPDHII antibody (11-3028) was used at 1 µg/ml on K562 lysate.