

## 20-1061: Polyclonal antibody to DEDD2 (DED4)

<b>Clonality :</b>	Polyclonal
<b>Application :</b>	WB
<b>Reactivity :</b>	Dog,Rat,Mouse,Human
<b>Gene :</b>	DEDD2
<b>Gene ID :</b>	162989
<b>Uniprot ID :</b>	Q8WXF8
<b>Format :</b>	Sera
<b>Alternative Name :</b>	DEDD2,FLAME3,PSEC0004
<b>Isotype :</b>	Rabbit IgG
<b>Immunogen Information :</b>	A synthetic peptide of DEDD2 (DED4) protein (amino acids 210-228 GPALQGVASRRPQALARQ) was used as immunogen for this antibody

### Description

This antibody recognizes DEDD2/Flame-3; human DED2/Flame-3 is a 326 amino acid protein. This protein belongs to a family of single DED-containing proteins that is targeted to the nucleus. Several DED-containing proteins are involved in the regulation of apoptosis through their interactions with DED-containing caspases. It is thought that DEDD2 and its closely related homologue DEDD may mediate cell death by binding to the DED-containing caspases -8 and -10, and targeting them to the nucleus following death receptor induced apoptosis. However, the function of DEDD2 and DEDD remain to be fully elucidated, and they may also have roles in cellular processes other than apoptosis.

### Product Info

<b>Amount :</b>	50 µl
<b>Content :</b>	50 µl sera
<b>Storage condition :</b>	Store the antibody at 4°C, stable for 6 months. For long-term storage, store at -20°C. Avoid repeated freeze and thaw cycles.

### Application Note

WB: 1:1000-1:5000

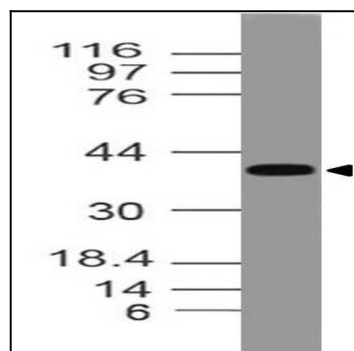


Fig-1: Western blot analysis of DEDD2 (DED4). Anti- DEDD2 (DED4) antibody (20-1061) was used with 1:1000 dilution on h Heart lysate.