

20-1062: Polyclonal antibody to DEDD2 (DED2/Flame-3)

Clonality :	Polyclonal
Application :	IP,IHC,WB
Reactivity :	Human
Gene :	DEDD2
Gene ID :	162989
Uniprot ID :	Q8WXF8
Format :	Sera
Alternative Name :	DEDD2,FLAME3,PSEC0004
Isotype :	Rabbit IgG
Immunogen Information :	A synthetic peptide of DEDD2 (DED2/Flame-3) protein (amino acids 175-193 APAAPQQSEPARPSSEGK) was used as immunogen for this antibody

Description

This antibody recognizes DEDD2/Flame-3; human DED2/Flame-3 is a 326 amino acid protein. This protein belongs to a family of single DED-containing proteins that is targeted to the nucleus. Several DED-containing proteins are involved in the regulation of apoptosis through their interactions with DED-containing caspases. It is thought that DEDD2 and its closely related homologue DEDD may mediate cell death by binding to the DED-containing caspases -8 and -10, and targeting them to the nucleus following death receptor induced apoptosis. However, the function of DEDD2 and DEDD remain to be fully elucidated, and they may also have roles in cellular processes other than apoptosis.

Product Info

Amount :	50 µl
Content :	50 µl sera
Storage condition :	Store the antibody at 4°C, stable for 6 months. For long-term storage, store at -20°C. Avoid repeated freeze and thaw cycles.

Application Note

WB: 1:1000-1:2000, IHC (paraffin): 1:1000-1:5000, IHC (frozen): Users should optimize, IP: 1:50-1:200

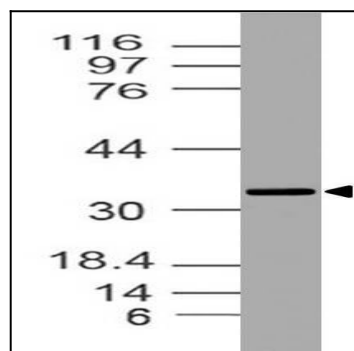


Figure-1: Western blot analysis of DEDD2 . Anti- DEDD2 antibody (20-1062) was used with 1:2000 dilution on Raw lysate.