

## 20-1071: Polyclonal antibody to NLRP1/NALP1 (NAC-alpha)

<b>Clonality :</b>	Polyclonal
<b>Application :</b>	IP,IHC,WB
<b>Reactivity :</b>	Human
<b>Gene :</b>	NLRP1
<b>Gene ID :</b>	22861
<b>Uniprot ID :</b>	Q9C000
<b>Format :</b>	Sera
<b>Alternative Name :</b>	NLRP1,CARD7,DEFCAP,KIAA0926,NAC,NALP1
<b>Isotype :</b>	Rabbit IgG
<b>Immunogen Information :</b>	A synthetic peptide of human NALP1 (NAC/CARD7) (amino acids 1058-1077 CVPSPASQDLHTKPLGTDD) was used as immunogen for this antibody

### Description

This antibody recognizes NALP1; human NALP1 is a 1473 amino acid protein, NALP1 (also known as NACHT, LRR and PYD containing protein 1) is a member of NALP CLR subfamily, has an N-terminal pyrin domain (PYD), followed by an NBD, LRR, and a C-terminal CARD domain. NALP1 is a component of both the inflammasome and apoptosome, suggesting that NALP1 has important roles in both inflammation and apoptosis. However, multiple splice variants encoding distinct NALP1 isoforms with varying amino acid lengths have been described and thus the molecular weight detected may vary depending on the isoform(s) expressed.

### Product Info

<b>Amount :</b>	50 µl
<b>Content :</b>	50 µl sera
<b>Storage condition :</b>	Store the antibody at 4°C, stable for 6 months. For long-term storage, store at -20°C. Avoid repeated freeze and thaw cycles.

### Application Note

WB: 1:1000-1:2000, IHC (paraffin): 1:1000-1:5000, IHC (frozen): Users should optimize, IP: 1:50-1:200

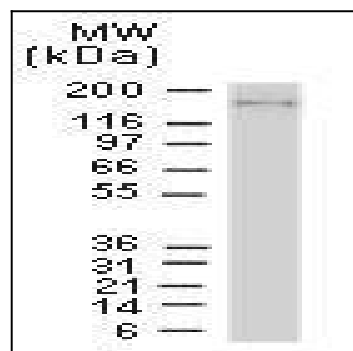


Fig:1 Western blot analysis of NALP1 (NAC/CARD7) in Jurkat cells using the 20-1071 NALP1 antibody at 1:2000.

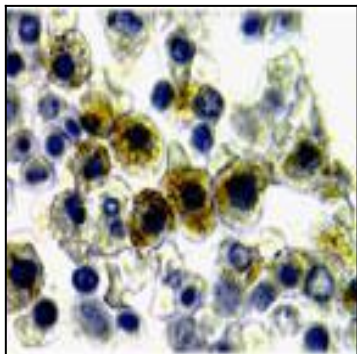


Fig:2 Formalin-fixed, paraffin-embedded normal human bone marrow stained for NALP1 (CARD7/NAP) using NALP1 antibody at 1:2000. Hematoxylin-eosin counterstain. Staining is seen in differentiated granulocytes.