

20-1102: Polyclonal antibody to TRAF-6

Clonality :	Polyclonal
Application :	IP,IHC,WB
Reactivity :	Rat,Mouse,Human
Gene :	TRAF6
Gene ID :	7189
Uniprot ID :	Q9Y4K3
Format :	Sera
Alternative Name :	TRAF6,RNF85
Isotype :	Rabbit IgG
Immunogen Information :	A synthetic peptide of human TRAF-6 (amino acids 451-469 DAKPELLAFQRPTIPRNPK) was used as immunogen for this antibody

Description

Human TRAF6 is a 522 amino acid protein. The TRAF (TNF receptor-associated factor) family is a group of adapter proteins (TRAFs 1-6) that link a wide variety of cell surface receptors to diverse signaling cascades leading to the activation of NF- κ B and mitogen-activated protein kinases. TRAFs are major signal transducers for both the TNF and IL-1/TLR receptor superfamilies and collectively play important functions in both adaptive and innate immunity. The carboxy-terminal region of TRAFs is required for self-association and interaction with receptor cytoplasmic domains following ligand-induced oligomerization. TRAFs interact with a variety of proteins that regulate receptor-induced cell death or survival, and TRAF-mediated signaling can promote cell survival or interfere with death receptor-induced apoptosis.

Product Info

Amount :	50 μ l
Content :	50 μ l sera
Storage condition :	Store the antibody at 4°C, stable for 6 months. For long-term storage, store at -20°C. Avoid repeated freeze and thaw cycles.

Application Note

WB: 1:1000-1:2000, IHC (paraffin): 1:1000-1:5000, IHC (frozen): Users should optimize, IP: 1:50-1:200

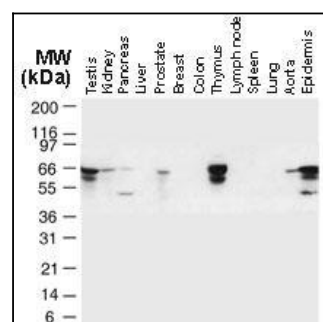


Fig:1 Western blot analysis of TRAF6 in normal human tissues using 20-1102 at 1:2000. TRAF6 is observed at ~66 kDa. Additional bands of lower molecular weight were seen in some cases, and may represent TRAF6 degradation fragments.

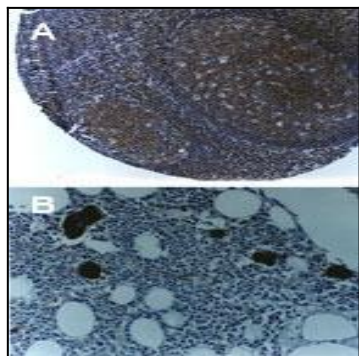


Fig:2 Formalin-fixed, paraffin- embedded tissue sections stained for TRAF6 using 20-1102 at 1:2000. Hematoxylin-eosin counterstain. A, mouse lymph node. B, mouse bone marrow.

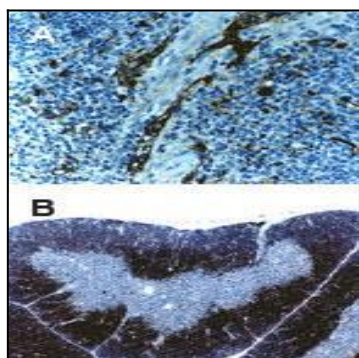


Fig:3 Formalin-fixed, paraffin- embedded tissue sections stained for TRAF6 using 20-1102 at 1:2000. Hematoxylin-eosin counterstain. A, mouse spleen. B, mouse thymus.