

## 10-7574: Monoclonal Antibody to Cyclin D1 (Clone: ABM47F5)

<b>Clonality :</b>	Monoclonal
<b>Clone Name :</b>	ABM47F5
<b>Application :</b>	IHC
<b>Reactivity :</b>	Human
<b>Gene :</b>	CCND1
<b>Gene ID :</b>	595
<b>Uniprot ID :</b>	P24385
<b>Format :</b>	Purified
<b>Alternative Name :</b>	CCND1,DIP1,GCIP,HHM
<b>Isotype :</b>	Mouse IgG2a Kappa
<b>Immunogen Information :</b>	A partial length recombinant Cyclin D1 protein (amino acids 107-275) was used as the immunogen for this antibody.

### Description

Cyclin D1 (CCND1) is an important positive regulator of the G1/S phase of the cell cycle. It regulate cell cycle transition from G1 phase to S phase It is a well-established human oncogene which is frequently amplified or overexpressed in cancers (25409185). Cyclin D1b is one of two proteins translated from Cyclin D1 transcripts (isoforms a and b) that are generated due to gene polymorphism. Low Cyclin D1b expression in cervical cancer tissue, with an expression level in moderately or poorly differentiated tissues was significantly lower than that in well-differentiated tissues (25120779). Diseases associated with CCND1 include multiple myeloma and mantle cell lymphoma.

### Product Info

<b>Amount :</b>	25 µg / 100 µg
<b>Purification :</b>	Protein G Chromatography
<b>Content :</b>	25 µg in 50 µl/100 µg in 200 µl PBS containing 0.05% BSA and 0.05% sodium azide. Sodium azide is highly toxic.
<b>Storage condition :</b>	Store the antibody at 4°C; stable for 6 months. For long-term storage; store at -20°C. Avoid repeated freeze and thaw cycles.

### Application Note

Immunohistochemical analysis: 5-10 µg/ml

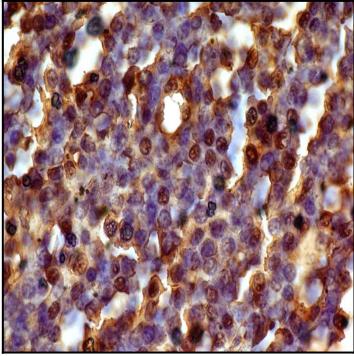


Fig-1: Immunohistochemical analysis of Cyclin D1 in Mantle cell using Cyclin D1 antibody (Clone: ABM47F5) at 5 µg/ml.