

## 10-7570: Monoclonal Antibody to Endoglin (Clone: ABM46D3)

<b>Clonality :</b>	Monoclonal
<b>Clone Name :</b>	ABM46D3
<b>Application :</b>	WB
<b>Reactivity :</b>	Human
<b>Gene :</b>	ENG
<b>Gene ID :</b>	2022
<b>Uniprot ID :</b>	P17813
<b>Format :</b>	Purified
<b>Alternative Name :</b>	ENG,END
<b>Isotype :</b>	Mouse IgG1 Kappa
<b>Immunogen Information :</b>	A partial length recombinant Endoglin protein (amino acids 43-287) was used as the immunogen for this antibody.

### Description

ENG (Endoglin) is an integral membrane glycoprotein that serves as a co receptor for members of the transforming growth factor-beta superfamily of proteins. It is a type I membrane glycoprotein expressed as a disulfide-linked homodimer on human vascular endothelial cells and is implicated in a dominant vascular dysplasia known as hereditary hemorrhagic telangiectasia as well as in preeclampsia. Endoglin suppresses human prostate cancer (PCa) cell invasion. It has been identified as a candidate tumor-suppressor gene in esophageal squamous cell carcinoma (ESCC).

### Product Info

<b>Amount :</b>	25 µg / 100 µg
<b>Purification :</b>	Protein G Chromatography
<b>Content :</b>	25 µg in 50 µl/100 µg in 200 µl PBS containing 0.05% BSA and 0.05% sodium azide. Sodium azide is highly toxic.
<b>Storage condition :</b>	Store the antibody at 4°C; stable for 6 months. For long-term storage; store at -20°C. Avoid repeated freeze and thaw cycles.

### Application Note

Western blot analysis: 4-6 µg/ml

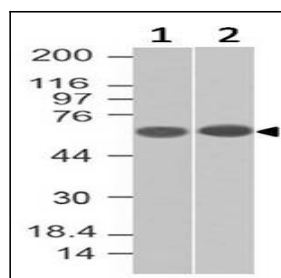


Fig-1: Western blot analysis of Endoglin. Anti-Endoglin antibody (Clone: ABM46D3) was tested at 4 µg/ml on (1) PANC-1 and (2) THP1 lysates.