

## 11-12005: Polyclonal Antibody to GNPDA1

<b>Clonality :</b>	Polyclonal
<b>Application :</b>	WB
<b>Reactivity :</b>	Human
<b>Gene :</b>	GNPDA1
<b>Gene ID :</b>	10007
<b>Uniprot ID :</b>	P46926
<b>Format :</b>	Purified
<b>Alternative Name :</b>	GNPDA1,GNPI,HLN,KIAA0060
<b>Isotype :</b>	Rabbit IgG
<b>Immunogen Information :</b>	A partial length recombinant GNPDA1 protein (amino acids 13-242) was used as the immunogen for this antibody.

### Description

GNPDA1 is an allosteric enzyme that catalyzes the reversible conversion of D-glucosamine-6-phosphate into D-fructose-6-phosphate and ammonium. This protein triggers calcium oscillations in mammalian eggs. These oscillations serve as the essential trigger for egg activation and early development of the embryo. GNPDA1 highest expression is found in ovary and colon and in KG-1 and HeLa cell lines.

### Product Info

<b>Amount :</b>	25 µg / 100 µg
<b>Purification :</b>	Protein A Chromatography
<b>Content :</b>	25 µg in 50 µl/100 µg in 200 µl PBS containing 0.05% BSA and 0.05% sodium azide. Sodium azide is highly toxic.
<b>Storage condition :</b>	Store the antibody at 4°C; stable for 6 months. For long-term storage; store at -20°C. Avoid repeated freeze and thaw cycles.

### Application Note

Western blot analysis: 1-2 µg/ml

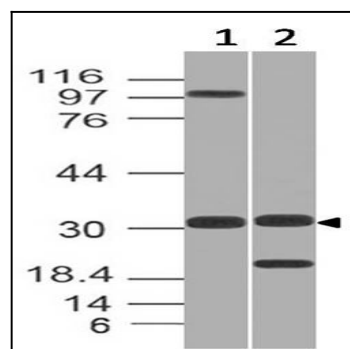


Fig-1: Expression analysis of GNPDA1. Anti-GNPDA1 antibody (11-12005) was used at 1 µg/ml on (1) h Testis and (2) h Kidney lysates