

## 11-8067: Polyclonal Antibody to KLF10

|                                |  |
|--------------------------------|--|
| <b>Clonality :</b>             | Polyclonal   |
| <b>Application :</b>           | WB   |
| <b>Reactivity :</b>            | Human  |
| <b>Gene :</b>                  | KLF10  |
| <b>Gene ID :</b>               | 7071   |
| <b>Uniprot ID :</b>            | Q13118   |
| <b>Format :</b>                | Purified   |
| <b>Alternative Name :</b>      | KLF10,TIEG,TIEG1   |
| <b>Isotype :</b>               | Rabbit IgG   |
| <b>Immunogen Information :</b> | A partial length recombinant KLF10 protein (amino acids 11-221) was used as the immunogen for this antibody. |

### Description

Kruppel-like factor 10 (KLF10) is a member of the Kruppel-like family of transcription factors, which are known to be involved in anti-proliferative and apoptotic inducing functions following TGF-beta induction. KLF10 plays an important role in the repression of proliferative and hypertrophic pathways, possibly through the actions of PTTG1 (pituitary tumor-transforming gene 1). KLF10 is found to be predominantly expressed in various tissues and its expression is regulated by cytokines and growth factors. Over-expression of KLF10 has been found to induce apoptosis in pancreatic cancer cells. In addition, KLF10 induces apoptosis via a mechanism which involves the formation of reactive oxygen species.

### Product Info

|                            |   |
|----------------------------|---|
| <b>Amount :</b>            | 25 µg / 100 µg  |
| <b>Purification :</b>      | Protein A Chromatography  |
| <b>Content :</b>           | 25 µg in 50 µl/100 µg in 200 µl PBS containing 0.05% BSA and 0.05% sodium azide. Sodium azide is highly toxic.                |
| <b>Storage condition :</b> | Store the antibody at 4°C; stable for 6 months. For long-term storage; store at -20°C. Avoid repeated freeze and thaw cycles. |

### Application Note

Western blot analysis: 1-2 µg/ml

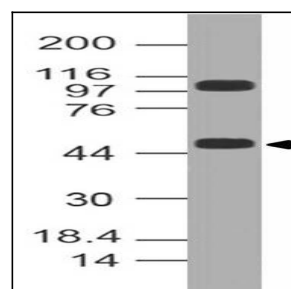


Fig-1: Western blot analysis of KLF10. Anti-KLF10 antibody (11-8067) was used at 1 µg/ml on Hela lysate.