

## 11-8065: Polyclonal Antibody to Mafa

<b>Clonality :</b>	Polyclonal
<b>Application :</b>	WB
<b>Reactivity :</b>	Human
<b>Gene :</b>	MAFA
<b>Gene ID :</b>	389692
<b>Uniprot ID :</b>	Q8NHW3
<b>Format :</b>	Purified
<b>Alternative Name :</b>	MAFA
<b>Isotype :</b>	Rabbit IgG
<b>Immunogen Information :</b>	A partial length recombinant Mafa protein (amino acids 192-353) was used as the immunogen for this antibody.

### Description

Musculoaponeurotic fibrosarcoma oncogene family A (MafA) is a pancreatic transcriptional factor that is important to pancreatic beta-cell function. It is a member of the musculo-aponeurotic fibrosarcoma oncogene family, a subgroup of the basic leucine zipper transcription factors with homology to the v-Maf oncoprotein. It acts as a transcriptional regulator that promotes the expression of genes important in glucose-induced insulin secretion, such as insulin, glucokinase and glucose transporter protein-2. Mafa is unique in being exclusively expressed at the secondary and principal phase of insulin-expressing cell production during pancreas organogenesis and is the only transcriptional activator present exclusively in islet beta-cells thus may be involved in pathogenesis of diabetes.

### Product Info

<b>Amount :</b>	25 µg / 100 µg
<b>Purification :</b>	Protein A Chromatography
<b>Content :</b>	25 µg in 50 µl/100 µg in 200 µl PBS containing 0.05% BSA and 0.05% sodium azide. Sodium azide is highly toxic.
<b>Storage condition :</b>	Store the antibody at 4°C; stable for 6 months. For long-term storage; store at -20°C. Avoid repeated freeze and thaw cycles.

### Application Note

Western blot analysis: 1-2 µg/ml

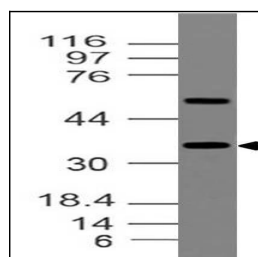


Fig-1: Western blot analysis of Mafa. Anti-Mafa antibody (11-8065) was used at 1 µg/ml on h Kidney lysate.