

11-12014: Polyclonal Antibody to SC1

Clonality :	Polyclonal
Application :	WB
Reactivity :	Human
Gene :	TCF19
Gene ID :	6941
Uniprot ID :	Q9Y242
Format :	Purified
Alternative Name :	TCF19,SC1
Isotype :	Rabbit IgG
Immunogen Information :	A partial length recombinant SC1 protein (amino acids 86-291) was used as the immunogen for this antibody.

Description

SC1 is a putative transactivating factor, with expression beginning at the late G1/S boundary in dividing cells. It contains a FHA association (Forkhead) domain, which may serve as a nuclear signaling domain or as a phosphoprotein binding domain. SC1 is expressed in mouse and human islets, with increasing mRNA expression in nondiabetic obesity. The expression of SC1 is correlated with Beta-cell mass expansion, suggesting that it may be a transcriptional regulator of Beta-cell mass.

Product Info

Amount :	25 µg / 100 µg
Purification :	Protein A Chromatography
Content :	25 µg in 50 µl/100 µg in 200 µl PBS containing 0.05% BSA and 0.05% sodium azide. Sodium azide is highly toxic.
Storage condition :	Store the antibody at 4°C; stable for 6 months. For long-term storage; store at -20°C. Avoid repeated freeze and thaw cycles.

Application Note

Western blot analysis: 1-2 µg/ml

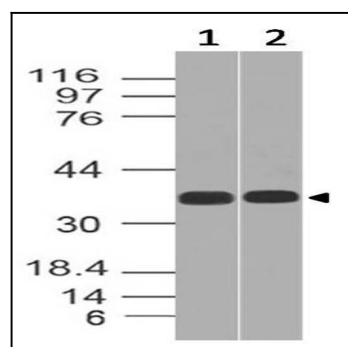


Fig-1: Expression analysis of SC1. Anti-SC1 antibody (11-12014) was used at 1 µg/ml on (1) h Spleen and (2) PC3 lysates.