

36-1096: Monoclonal Antibody to IgA Secretory Component / ECM1(Clone : ECM1/792)

Clonality :	Monoclonal
Clone Name :	ECM1/792
Application :	FACS,IF,IHC
Reactivity :	Human
Gene :	ECM1
Gene ID :	1893
Uniprot ID :	Q16610
Format :	Purified
Alternative Name :	ECM1
Isotype :	Mouse IgG1, kappa
Immunogen Information :	Recombinant human ECM1 protein

Description

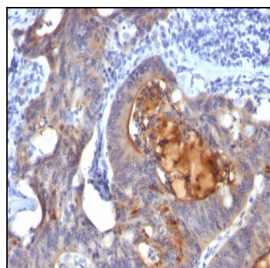
This MAb reacts with a reduction-resistant epitope present in both free and SIgA bound Secretory Component. It does not react with the cell lines lacking secretory component. The antibody is useful for studying the distribution and level of both free and bound secretory component. Secretory component is differentially expressed in epithelium, and the antibody is a popular marker for identifying subpopulations of epithelial cells and epithelial differentiation. The Secretory component antibody is a useful research tool for studying mucosal immunity, inflammation, remodeling, differentiation and tumorigenesis, all processes associated with differential secretory component expression.

Product Info

Amount :	100 µg
Purification :	Affinity Chromatography
Content :	100 µg in 500 µl PBS containing 0.05% BSA and 0.05% sodium azide. Sodium azide is highly toxic.
Storage condition :	Store the antibody at 4°C; stable for 6 months. For long-term storage; store at -20°C. Avoid repeated freeze and thaw cycles.

Application Note

Flow Cytometry (0.5-1ug/million cells); Immunofluorescence (1-2ug/ml); ,Immunohistochemistry (Formalin-fixed) (0.5-1ug/ml for 30 minutes at RT) ,(Staining of formalin-fixed tissues requires boiling tissue sections in 10mM Citrate Buffer, pH 6.0, for 10-20 min followed by cooling at RT for 20 minutes),



Formalin-fixed, paraffin-embedded human Colon Carcinoma stained with IgA Secretory Component Monoclonal Antibody (ECM1/792).