

## 10-4110: Monoclonal Antibody to CD69 (Clone: ABM39A4)

<b>Clonality :</b>	Monoclonal
<b>Clone Name :</b>	ABM39A4
<b>Application :</b>	IHC,FACS,WB
<b>Reactivity :</b>	Human
<b>Gene :</b>	CD69
<b>Gene ID :</b>	969
<b>Uniprot ID :</b>	Q07108
<b>Format :</b>	Purified
<b>Alternative Name :</b>	CD69,CLEC2C
<b>Isotype :</b>	Mouse IgG2a Kappa
<b>Immunogen Information :</b>	Full length recombinant CD69 protein was used as the immunogen for this antibody.

### Description

CD69 is a type II transmembrane protein of the C-type lectin family and its gene is located within the natural killer gene complex. In healthy subjects, CD69 is not detected in peripheral blood lymphocytes, but is expressed on small subsets of T and B cells in peripheral lymphoid tissues. CD69 gene maps at human chromosome 12, and behaves as an early activation gene that contains responsive elements for the transcription factors NF-kappaB, ERG-1 and AP-1. This protein acts as a leukocyte activation marker, and is involved in the activation of different leukocyte subsets as well as in the pathogenesis of chronic inflammation.

### Product Info

<b>Amount :</b>	25 µg / 100 µg
<b>Purification :</b>	Protein G Chromatography
<b>Content :</b>	25 µg in 50 µl/100 µg in 200 µl PBS containing 0.05% BSA and 0.05% sodium azide. Sodium azide is highly toxic.
<b>Storage condition :</b>	Store the antibody at 4°C, stable for 6 months. For long-term storage, store at -20°C. Avoid repeated freeze and thaw cycles.

### Application Note

Western blot analysis: 2-4 µg/ml, Immunohistochemical analysis: 5 µg/ml

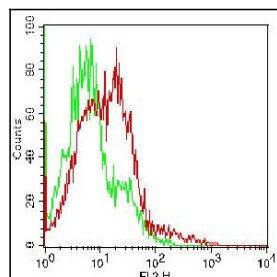


Fig-1: Cell surface FLOW analysis of hCD69 (10-4110) in PBMC treated 3 days with PMA + Ionomycin (Lymphocytes gated) using 0.5 µg antibody per 10<sup>6</sup> cells. Green represents PBMC W/O treatment, red represents PBMC with treatment. Goat anti-mouse PE conjugated secondary antibody was used (ABEOMICS).

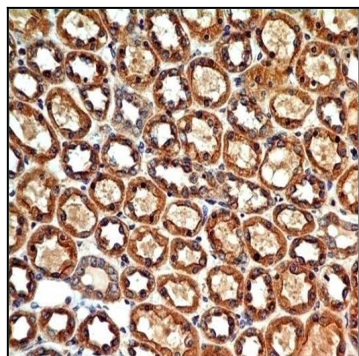


Fig-2 : Immunohistochemical analysis of CD69 in human kidney tissue using CD69 antibody (Clone: ABM39A4) at 5 µg/ml.

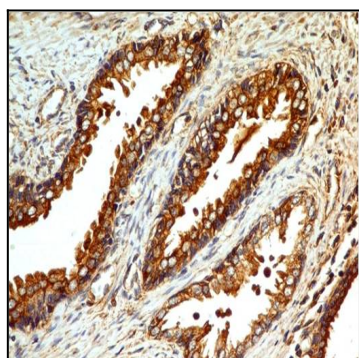


Figure-3: Immunohistochemical analysis of CD69 in human Prostate tissue using CD69 antibody (Clone: ABM39A4) at 5 µg/ml.

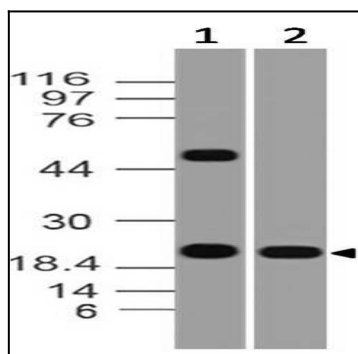


Figure-4: Western blot analysis of CD69. Anti- CD69 antibody (Clone: ABM39A4) was used at 4 µg/ml on (1)Daudi and (2) h Lung lysates.

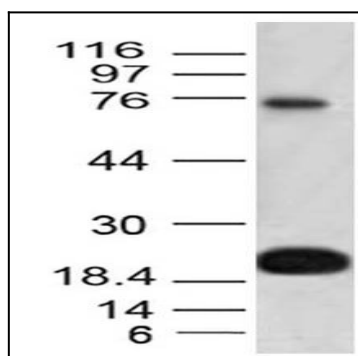


Figure-5: Western blot analysis of CD69. Anti- CD69 antibody (Clone: ABM39A4) was used at 2 µg/ml on U937 lysate.