

10-3018: Monoclonal Antibody to NALP3 (Clone: ABM2D48)

Clonality :	Monoclonal
Clone Name :	ABM2D48
Application :	IHC, WB
Reactivity :	Mouse, Human
Gene :	NLRP3
Gene ID :	114548
Uniprot ID :	Q96P20
Format :	Purified
Alternative Name :	NLRP3, C1orf7, CIAS1, NALP3, PYPAF1
Isotype :	Mouse IgG2b Kappa
Immunogen Information :	A partial length recombinant NALP3 protein (amino acids 150-385) was used as the immunogen for this antibody.

Description

NALP3 (NACHT, LRR and PYD domains-containing protein 3), otherwise known as cryopyrin, is a member of the NLR (Nod-like-receptors) family. This is a pyrin-like protein, having N-terminal CARD or pyrin domains needed for homotypic protein interaction, an intermediate nucleotide binding self oligomerization NACHT domain and a C-terminal domain containing leucine rich repeats (LRRs). NALP3 is a key component of innate immunity and its expression is restricted to immune cells and chondrocytes. It interacts with the apoptosis-associated speck-like protein PYCARD/ASC, which contains a caspase recruitment domain, and is a member of the NALP3 inflammasome complex. This complex functions as an upstream activator of NF- κ B signaling, and it plays an important role in the regulation of inflammation, the immune response, and apoptosis.

Product Info

Amount :	25 μ g / 100 μ g
Purification :	Protein G Chromatography
Content :	25 μ g in 50 μ l/100 μ g in 200 μ l PBS containing 0.05% BSA and 0.05% sodium azide. Sodium azide is highly toxic.
Storage condition :	Store the antibody at 4°C, stable for 6 months. For long-term storage, store at -20°C. Avoid repeated freeze and thaw cycles.

Application Note

Western blot analysis: 6-8 μ g/ml, Immunohistochemical analysis: 5 μ g/ml

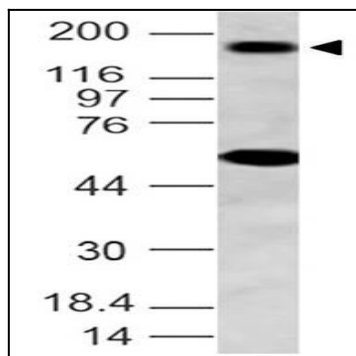


Fig-1: Western blot analysis of NALP3. Anti- NALP3 antibody (Clone: ABM2D48) was tested at 8 μ g/ml on NIH 3T3 lysate.

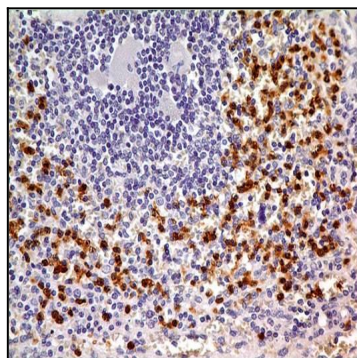


Fig-2 : Immunohistochemical analysis of NALP3 in human spleen tissue using NALP3 antibody (Clone: ABM2D48) at 5 μ g/ml.