

### 36-1075: Polyclonal Antibody to beta-Catenin (p120)

<b>Clonality :</b>	Polyclonal
<b>Application :</b>	FACS, WB, IHC
<b>Reactivity :</b>	Human, Mouse
<b>Gene :</b>	CTNNB1
<b>Gene ID :</b>	1499
<b>Uniprot ID :</b>	P35222
<b>Format :</b>	Purified
<b>Alternative Name :</b>	CTNNB1, CTNNB, OK/SW-cl.35, PRO2286
<b>Isotype :</b>	Rabbit IgG
<b>Immunogen Information :</b>	A synthetic peptide from the middle of beta-Catenin (p120) protein

#### Description

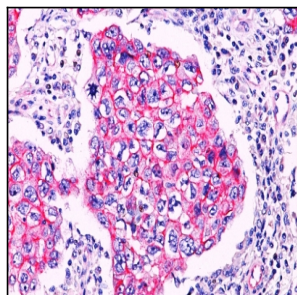
Beta-catenin associates with the cytoplasmic portion of E-cadherin, which is necessary for the function of E-cadherin as an adhesion molecule. In normal tissues, beta-catenin is localized to the membrane of epithelial cells, consistent with its role in the cell adhesion complex. In breast ductal neoplasia, beta-catenin is usually localized in cellular membranes. However, in lobular neoplasia, a marked redistribution of beta-catenin throughout the cytoplasm results in a diffuse cytoplasmic pattern. Immuno-staining of beta-catenin and E-cadherin helps in the accurate identification of ductal and lobular neoplasms, including a distinction between low-grade ductal carcinoma in situ (DCIS) and lobular carcinoma. Additionally, some rectal and gastric adenocarcinomas demonstrate diffuse cytoplasmic beta-catenin staining and a lack of membranous staining, mimicking the staining pattern observed with lobular breast carcinomas.

#### Product Info

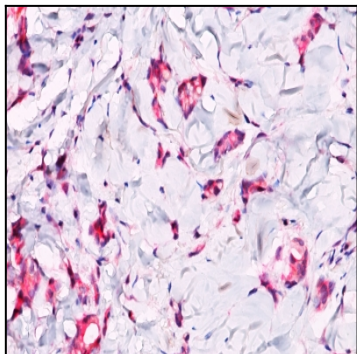
<b>Amount :</b>	100 µg
<b>Purification :</b>	Affinity Chromatography
<b>Content :</b>	100 µg in 500 µl PBS containing 0.05% BSA and 0.05% sodium azide. Sodium azide is highly toxic.
<b>Storage condition :</b>	Store the antibody at 4°C; stable for 6 months. For long-term storage; store at -20°C. Avoid repeated freeze and thaw cycles.

#### Application Note

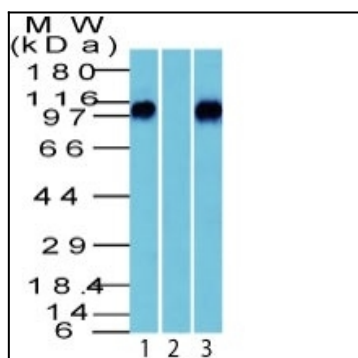
Flow Cytometry (0.5-1ug/million cells); Western Blot (1-2ug/ml); Immunohistochemistry (Formalin-fixed) (1-2ug/ml for 30 minutes at RT)(Staining of formalin-fixed tissues requires heating tissue sections in 1mM EDTA, pH 9.0, for 45 min at 95&degC followed by cooling at RT for 20 minutes)



Formalin-fixed, paraffin-embedded human Breast Ductal Carcinoma stained with beta Catenin (p120) Polyclonal Antibody. Note membrane staining in ductal carcinoma.



Formalin-fixed, paraffin-embedded breast lobular carcinoma stained with beta Catenin (p120) Polyclonal Antibody. Note cytoplasmic staining in lobular carcinoma.



Western Blot of beta Catenin (p120) in human brain in 1) absence and 2) presence of immunizing peptide and 3) mouse brain Lysate using beta Catenin (p120) Polyclonal Antibody.