

### 36-1043: Monoclonal Antibody to MALT1 (MALT-Lymphoma Marker)(Clone : MT1/410)

<b>Clonality :</b>	Monoclonal
<b>Clone Name :</b>	MT1/410
<b>Application :</b>	WB,IHC
<b>Reactivity :</b>	Human
<b>Gene :</b>	MALT1
<b>Gene ID :</b>	10892
<b>Uniprot ID :</b>	Q9UDY8
<b>Format :</b>	Purified
<b>Alternative Name :</b>	MALT1,MLT
<b>Isotype :</b>	Mouse IgG1, kappa
<b>Immunogen Information :</b>	Human MALT1 recombinant fragment (aa701-808)

#### Description

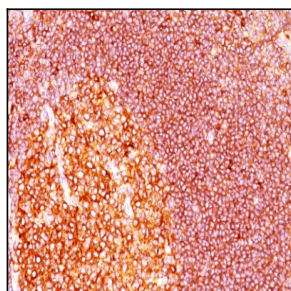
Mucosa associated lymphoid tissue lymphoma translocation gene 1 (MALT1) is found in extranodal low-grade B cell lymphomas. MALT1 encodes two Ig-like C2-type domains and fuses with an API2 gene, which is highly expressed in adult lymphoid tissue. The translocation of this MALT1 gene, which maps to human chromosome 18q21, and the apoptosis-inhibiting API2 gene results in an increased development of MALT lymphomas and apoptosis inhibition. Sites at which this API2-MALT1 (11;18)(q21;q21) translocation commonly occurs are within human lung and kidney tissue. MALT lymphoma expresses nuclear Bcl10, which mediates the oligomerization and activation of a MALT1 caspase-like domain. MALT1 mRNA is found in pre-B cells, mature B cells and plasma cells.

#### Product Info

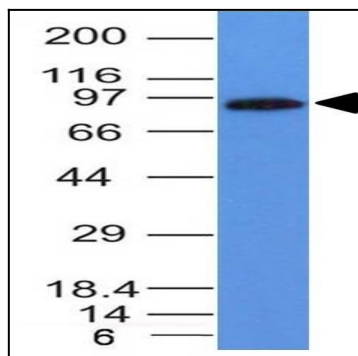
<b>Amount :</b>	100 µg
<b>Purification :</b>	Affinity Chromatography
<b>Content :</b>	100 µg in 500 µl PBS containing 0.05% BSA and 0.05% sodium azide. Sodium azide is highly toxic.
<b>Storage condition :</b>	Store the antibody at 4°C; stable for 6 months. For long-term storage; store at -20°C. Avoid repeated freeze and thaw cycles.

#### Application Note

Western Blot (1-2ug/ml);Immunohistochemistry (Formalin-fixed) (1-2ug/ml for 30 minutes at RT) ,(Staining of formalin-fixed tissues requires heating tissue sections in 10mM Tris with 1mM EDTA, pH 9.0, for 45 min at 95°C followed by cooling at RT for 20 minutes);



Formalin-fixed, paraffin-embedded human Tonsil stained with MALT1 Monoclonal Antibody (MT1/410)



Western Blot Analysis of Daudi Cell Lysate using MALT1 Monoclonal Antibody (MT1/410)