

36-1101: Monoclonal Antibody to EGFR (Epidermal Growth Factor Receptor)(Clone : SPM622)

| | |
|--------------------------------|-------------------------------------|
| Clonality : | Monoclonal |
| Clone Name : | SPM622 |
| Application : | FACS,IF,IHC |
| Reactivity : | Human |
| Gene : | EGFR |
| Gene ID : | 1956 |
| Uniprot ID : | P00533 |
| Format : | Purified |
| Alternative Name : | EGFR,ERBB,ERBB1,HER1 |
| Isotype : | Mouse IgG2a, kappa |
| Immunogen Information : | Human EGFR purified from A431 cells |

Description

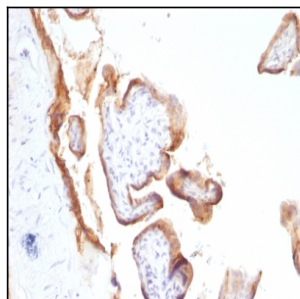
This MAb recognizes a protein of 170kDa, identified as EGFR. EGFR is type I receptor tyrosine kinase with sequence homology to erbB-1, -2, -3 -4 or HER-1, -2, -3 -4. It binds to Epidermal Growth Factor (EGF), Transforming Growth Factor- α (TGF- α), Heparin-binding EGF (HB-EGF), amphiregulin, beta cellulin and epiregulin. EGFR is overexpressed in tumors of breast, brain, bladder, lung, gastric, head & neck, esophagus, cervix, vulva, ovary, and endometrium. It is predominantly present in squamous cell carcinomas.

Product Info

| | |
|----------------------------|---|
| Amount : | 100 μ g |
| Purification : | Affinity Chromatography |
| Content : | 100 μ g in 500 μ l PBS containing 0.05% BSA and 0.05% sodium azide. Sodium azide is highly toxic. |
| Storage condition : | Store the antibody at 4°C; stable for 6 months. For long-term storage; store at -20°C. Avoid repeated freeze and thaw cycles. |

Application Note

Flow Cytometry (1-2ug/million cells); Immunofluorescence (1-2ug/ml); Immunohistochemistry (Formalin-fixed) (2-4ug/ml for 30 minutes at RT)(Digest formalin-fixed tissues with Protease (Sigma Cat. #P-6911) at 1mg/ml PBS, pH 7.4 for 10 min at 37C)



Formalin-fixed, paraffin-embedded human Placenta stained with EGFR Monoclonal Antibody (SPM622).