

36-1103: Monoclonal Antibody to EGFR (Epidermal Growth Factor Receptor)(31G7 + GFR1195)

Clonality :	Monoclonal
Clone Name :	31G7 + GFR1195
Application :	FACS,IF,IHC
Reactivity :	Human
Gene :	EGFR
Gene ID :	1956
Uniprot ID :	P00533
Format :	Purified
Alternative Name :	EGFR,ERBB,ERBB1,HER1
Isotype :	Mouse IgG2a, kappa
Immunogen Information :	Human EGFR purified from A431 cells (31G7); Recombinant human EGFR protein (GFR1195)

Description

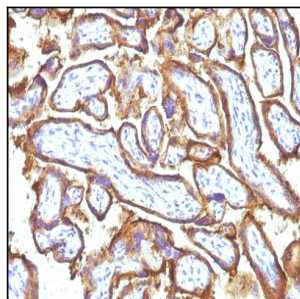
This MAb recognizes a protein of 170kDa, identified as EGFR. EGFR is type I receptor tyrosine kinase with sequence homology to erbB-1, -2, -3 -4 or HER-1, -2, -3 -4. It binds to Epidermal Growth Factor (EGF), Transforming Growth Factor- α (TGF- α), Heparin-binding EGF (HB-EGF), amphiregulin, beta cellulin and epiregulin. EGFR is overexpressed in tumors of breast, brain, bladder, lung, gastric, head & neck, esophagus, cervix, vulva, ovary, and endometrium. It is predominantly present in squamous cell carcinomas.

Product Info

Amount :	100 μ g
Purification :	Affinity Chromatography
Content :	100 μ g in 500 μ l PBS containing 0.05% BSA and 0.05% sodium azide. Sodium azide is highly toxic.
Storage condition :	Store the antibody at 4°C; stable for 6 months. For long-term storage; store at -20°C. Avoid repeated freeze and thaw cycles.

Application Note

Flow Cytometry (1-2ug/million cells); Immunofluorescence (1-2ug/ml); Immunohistochemistry (Formalin-fixed) (2-4ug/ml for 30 minutes at RT)(Digest formalin-fixed tissues with Protease (Sigma Cat. #P-6911) at 1mg/ml PBS, pH 7.4 for 10 min at 37C)



Formalin-fixed, paraffin-embedded human Placenta stained with EGFR Monoclonal Antibody (31G7 + GFR1195).