

36-1110: Monoclonal Antibody to Estrogen Receptor (Marker of Estrogen Dependence)(Clone : ER505)(Discontinued)

Clonality :	Monoclonal
Clone Name :	ER505
Application :	WB,IHC
Reactivity :	Human
Gene :	ESR1
Gene ID :	2099
Uniprot ID :	P03372
Format :	Purified
Alternative Name :	ESR1,ESR,NR3A1
Isotype :	Mouse IgG1 Kappa
Immunogen Information :	Recombinant human Estrogen Receptor alpha protein (aa2-185)

Description

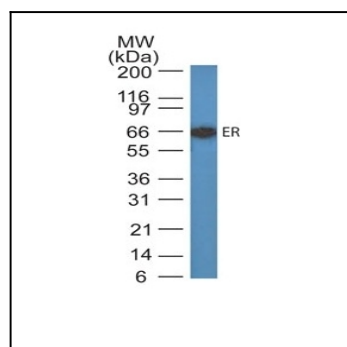
This MAb is specific to ER alpha and shows minimal cross-reaction with other members of the family. ER is an important regulator of growth and differentiation in the mammary gland. Presence of ER in breast tumors indicates an increased likelihood of response to anti-estrogen (e.g. tamoxifen) therapy. This MAb is excellent for staining of formalin-fixed, paraffin-embedded breast carcinomas.

Product Info

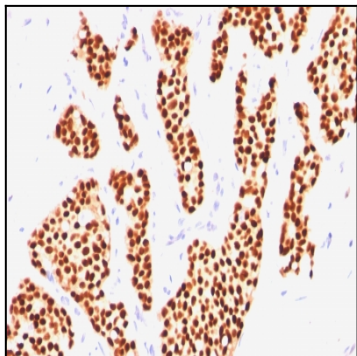
Amount :	100 µg
Purification :	Affinity Chromatography
Content :	100 µg in 500 µl PBS containing 0.05% BSA and 0.05% sodium azide. Sodium azide is highly toxic.
Storage condition :	Store the antibody at 4°C; stable for 6 months. For long-term storage; store at -20°C. Avoid repeated freeze and thaw cycles.

Application Note

Western Blot (0.5-1 µg/ml for 2 hours at Room Temp); Immunohistology (Formalin-fixed) (1-2 µg/ml for 30 minutes at RT); (Staining of formalin-fixed tissues requires boiling tissue sections in 10mM Citrate buffer, pH 6.0, for 10-20 min followed by cooling at RT for 20 minutes); Optimal dilution for a specific application should be determined.



Western Blot of Estrogen Receptor in MCF-7Lysate using Estrogen Receptor Monoclonal Antibody (ER505).



Formalin-fixed, paraffin-embedded human Breast Invasive Carcinoma stained with Estrogen Receptor Monoclonal Antibody (ER505).