

### 36-1111: Monoclonal Antibody to Estrogen Receptor (Marker of Estrogen Dependence)(Clone : SPM567)

<b>Clonality :</b>	Monoclonal
<b>Clone Name :</b>	SPM567
<b>Application :</b>	WB
<b>Reactivity :</b>	Human
<b>Gene :</b>	ESR1
<b>Gene ID :</b>	2099
<b>Uniprot ID :</b>	P03372
<b>Format :</b>	Purified
<b>Alternative Name :</b>	ESR1,ESR,NR3A1
<b>Isotype :</b>	Mouse IgG1, kappa
<b>Immunogen Information :</b>	Recombinant human Estrogen Receptor alpha protein (aa2-185)

#### Description

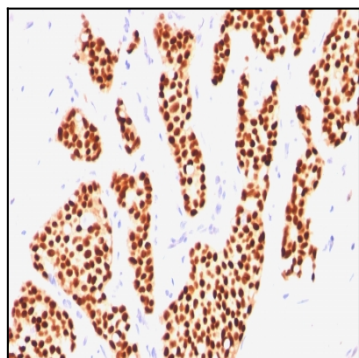
This MAb is specific to ER alpha and shows minimal cross-reaction with other members of the family. ER is an important regulator of growth and differentiation in the mammary gland. Presence of ER in breast tumors indicates an increased likelihood of response to anti-estrogen (e.g. tamoxifen) therapy. This MAb is excellent for staining of formalin-fixed, paraffin-embedded breast carcinomas.

#### Product Info

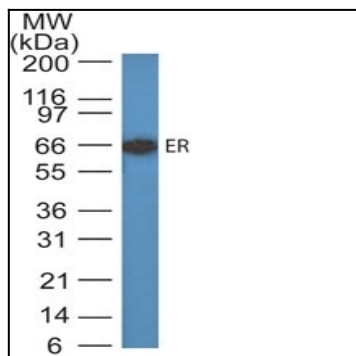
<b>Amount :</b>	100 µg
<b>Purification :</b>	Affinity Chromatography
<b>Content :</b>	100 µg in 500 µl PBS containing 0.05% BSA and 0.05% sodium azide. Sodium azide is highly toxic.
<b>Storage condition :</b>	Store the antibody at 4°C; stable for 6 months. For long-term storage; store at -20°C. Avoid repeated freeze and thaw cycles.

#### Application Note

Western Blot (1-2ug/ml for 2 hours at Room Temp);



Formalin-fixed, paraffin-embedded human Breast Carcinoma stained with Estrogen Receptor Monoclonal Antibody (SPM567).



Western Blot of Estrogen Receptor in MCF-7 Lysate using Estrogen Receptor Ab (SPM567).