

### 36-1118: Monoclonal Antibody to ER-beta1 (Estrogen Receptor beta-1)(Clone : ERb455)-PE

<b>Clonality :</b>	Monoclonal
<b>Clone Name :</b>	ERb455
<b>Application :</b>	FACS,IF
<b>Reactivity :</b>	Human, Mouse, Rat
<b>Conjugate :</b>	PE
<b>Gene :</b>	ESR2
<b>Gene ID :</b>	2100
<b>Uniprot ID :</b>	Q92731
<b>Format :</b>	Purified
<b>Alternative Name :</b>	ESR2,ESTRB,NR3A2
<b>Isotype :</b>	Mouse IgG2a, kappa
<b>Immunogen Information :</b>	C-terminus fragment of recombinant human estrogen receptor beta protein

#### Description

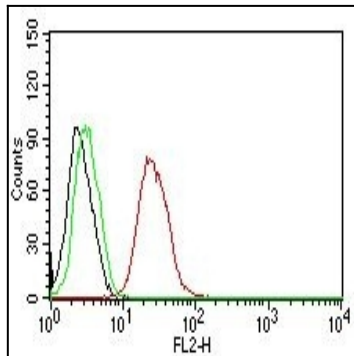
Estrogen receptors (ER) are members of the steroid/thyroid hormone receptor superfamily of ligand-activated transcription factors. Estrogen receptors, including ER-alpha and ER-beta, contain DNA binding and ligand binding domains and are critically involved in regulating the normal function of reproductive tissues. They are located in the nucleus, though some estrogen receptors associate with the cell surface membrane and can be rapidly activated by exposure of cells to estrogen. ER-alpha and ER-beta are differentially activated by various ligands. Receptor-ligand interactions trigger a cascade of events, including dissociation from heat shock proteins, receptor dimerization, phosphorylation and the association of the hormone activated receptor with specific regulatory elements in target genes. Evidence suggests that ER-alpha and ER-beta may be regulated by distinct mechanisms even though they share many functional characteristics.

#### Product Info

<b>Amount :</b>	0.5 ml
<b>Purification :</b>	Affinity Chromatography
<b>Content :</b>	PE conjugated ER-beta1 Prepared in 10mM PBS with 0.05% BSA and 0.05% azide.
<b>Storage condition :</b>	Store the antibody at 4°C; stable for 6 months.

#### Application Note

Flow Cytometry (5ul per test per one million cells or 5ul per 100ul of whole blood);Immunofluorescence (1:50-1:100 for 30 minutes at RT);



Flow Cytometry for human ER-beta on MCF-7 Cells. Black: Cells alone; Green: Isotype Control; Red: PE-labeled ER-beta1 Monoclonal Antibody (ERb455).