

## 36-1129: Monoclonal Antibody to MART-1 / Melan-A / MLANA (Melanoma Marker)(Clone : M2-9E3)

<b>Clonality :</b>	Monoclonal
<b>Clone Name :</b>	M2-9E3
<b>Application :</b>	FACS,IF,WB,IHC
<b>Reactivity :</b>	Human, Mouse, Rat
<b>Gene :</b>	MLANA
<b>Gene ID :</b>	2315
<b>Uniprot ID :</b>	Q16655
<b>Format :</b>	Purified
<b>Alternative Name :</b>	MLANA,MART1
<b>Isotype :</b>	Mouse IgG2b, kappa
<b>Immunogen Information :</b>	Recombinant hMART-1 protein

### Description

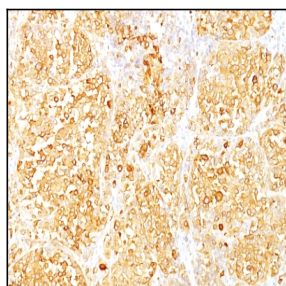
This antibody recognizes a protein doublet of 20-22kDa, identified as MART-1 (Melanoma Antigen Recognized by T cells 1) or Melan-A. MART-1 is a newly identified melanocyte differentiation antigen recognized by autologous cytotoxic T lymphocytes. Seven other melanoma associated antigens recognized by autologous cytotoxic T cells include MAGE-1, MAGE-3, tyrosinase, gp100, gp75, BAGE-1, and GAGE-1. Subcellular fractionation shows that MART-1 is present in melanosomes and endoplasmic reticulum. This MAb labels melanomas and other tumors showing melanocytic differentiation. It is also a useful positive-marker for angiomyolipomas. It does not stain tumor cells of epithelial, lymphoid, glial, or mesenchymal origin.

### Product Info

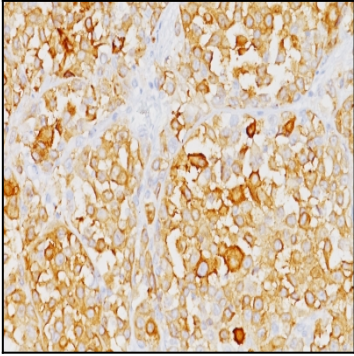
<b>Amount :</b>	100 µg
<b>Purification :</b>	Affinity Chromatography
<b>Content :</b>	100 µg in 500 µl PBS containing 0.05% BSA and 0.05% sodium azide. Sodium azide is highly toxic.
<b>Storage condition :</b>	Store the antibody at 4°C; stable for 6 months. For long-term storage; store at -20°C. Avoid repeated freeze and thaw cycles.

### Application Note

Flow Cytometry (1-2ug/million cells); Immunofluorescence (1-2ug/ml); Western Blot (1-2ug/ml); Immunohistochemistry (Formalin-fixed) (1-2ug/ml for 30 minutes at RT)(Staining of formalin-fixed tissues requires heating tissue sections in 10mM Tris with 1mM EDTA, pH 9.0, for 45 min at 95°C followed by cooling at RT for 20 minutes);



Formalin-fixed, paraffin-embedded human Melanoma stained with Melan-A Monoclonal Antibody (M2-9E3).



Formalin-fixed, paraffin-embedded human Melanoma stained with Melan-A Monoclonal Antibody (M2-9E3).