

36-1162: Monoclonal Antibody to CD15 / FUT4 (Reed-Sternberg Cell Marker)(Clone : BRA-4F1)

| | |
|--------------------------------|-------------------------------|
| Clonality : | Monoclonal |
| Clone Name : | BRA-4F1 |
| Application : | FACS,IF,IHC |
| Reactivity : | Human |
| Gene : | FUT4 |
| Gene ID : | 2526 |
| Uniprot ID : | P22083 |
| Format : | Purified |
| Alternative Name : | FUT4,ELFT,FCT3A |
| Isotype : | Mouse IgM, kappa |
| Immunogen Information : | Myelomonocytic leukemia cells |

Description

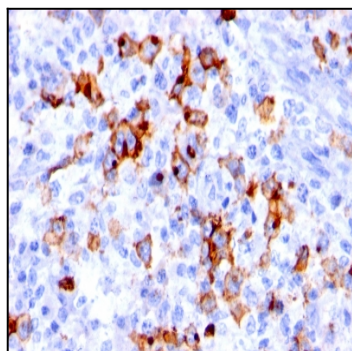
CD15 plays a role in mediating phagocytosis, bactericidal activity, and chemotaxis. It is present on >95% of granulocytes including neutrophils and eosinophils and to a lesser degree on monocytes. In addition, CD15 is expressed in Reed-Sternberg cells and some epithelial cells. CD15 antibody is very useful in the identification of Hodgkin's disease. CD15 is occasionally expressed in large cell lymphomas of both B and T phenotypes which otherwise have a quite distinct histological appearance.

Product Info

| | |
|----------------------------|---|
| Amount : | 100 µg |
| Purification : | Affinity Chromatography |
| Content : | 100 µg in 500 µl PBS containing 0.05% BSA and 0.05% sodium azide. Sodium azide is highly toxic. |
| Storage condition : | Store the antibody at 4°C; stable for 6 months. For long-term storage; store at -20°C. Avoid repeated freeze and thaw cycles. |

Application Note

Flow Cytometry (1-2ug/million cells); Immunofluorescence (1-2ug/ml); Immunohistochemistry (Formalin-fixed) (1-2ug/ml for 30 minutes at RT)(Staining of formalin-fixed tissues requires heating tissue sections in 1mM EDTA Buffer, pH 7.5-8.5, for 45 min at 95°C followed by cooling at RT for 20 minutes)



Formalin-fixed, paraffin-embedded human Hodgkin's lymphoma stained with CD15 Monoclonal Antibody (BRA-4F1).