

36-1207: Monoclonal Antibody to Glycophorin A / CD235a (Erythrocyte Marker)(Clone : GYPA/280)

Clonality :	Monoclonal
Clone Name :	GYPA/280
Application :	WB,IHC
Reactivity :	Human
Gene :	GYPA
Gene ID :	2993
Uniprot ID :	P02724
Format :	Purified
Alternative Name :	GYPA,GPA
Isotype :	Mouse IgG1, kappa
Immunogen Information :	Recombinant human glycophorin A protein

Description

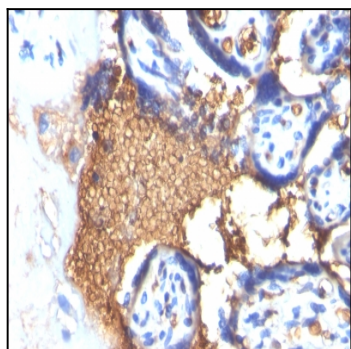
Recognizes a sialoglycoprotein of 39kDa, identified as glycophorin A (GPA). It is present on red blood cells (RBC) and erythroid precursor cells. It has been shown that glycophorin acts as the receptor for Sandei virus and parvovirus. Glycophorins A (GPA) and B (GPB), which are single, trans-membrane sialoglycoproteins. GPA is the carrier of blood group M and N specificities, while GPB accounts for S and U specificities. GPA and GPB provide the cells with a large mucin like surface and it has been suggested this provides a barrier to cell fusion, so minimizing aggregation between red blood cells in the circulation.

Product Info

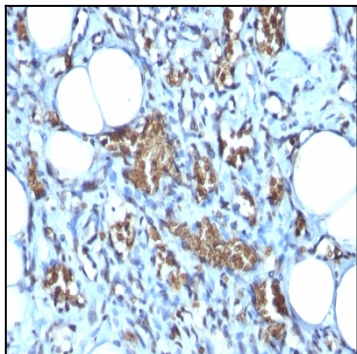
Amount :	100 µg
Purification :	Affinity Chromatography
Content :	100 µg in 500 µl PBS containing 0.05% BSA and 0.05% sodium azide. Sodium azide is highly toxic.
Storage condition :	Store the antibody at 4°C; stable for 6 months. For long-term storage; store at -20°C. Avoid repeated freeze and thaw cycles.

Application Note

Western Blot (1-2ug/ml); Immunohistochemistry (Formalin-fixed) (1-2ug/ml for 30 minutes at RT)(Staining of formalin-fixed tissues requires heating tissue sections in 10mM Tris with 1mM EDTA, pH 9.0, for 45 min at 95°C followed by cooling at RT for 20 minutes);



Formalin-fixed, paraffin-embedded human Placenta stained with Glycophorin A Monoclonal Antibody (GYPA/280)



Formalin-fixed, paraffin-embedded human Angiosarcoma stained with Glycophorin A Monoclonal Antibody (GYPA/280)