

36-1208: Monoclonal Antibody to Glycophorin A / CD235a (Erythrocyte Marker)(Clone : SPM599)

| | |
|--------------------------------|---|
| Clonality : | Monoclonal |
| Clone Name : | SPM599 |
| Application : | WB,IHC |
| Reactivity : | Human |
| Gene : | GYPA |
| Gene ID : | 2993 |
| Uniprot ID : | P02724 |
| Format : | Purified |
| Alternative Name : | GYPA,GPA |
| Isotype : | Mouse IgG1, kappa |
| Immunogen Information : | Recombinant human glycophorin A protein |

Description

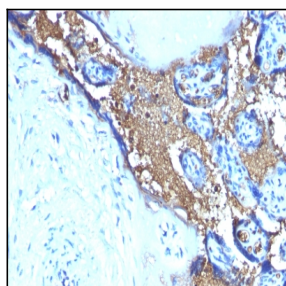
Recognizes a sialoglycoprotein of 39kDa, identified as glycophorin A (GPA). It is present on red blood cells (RBC) and erythroid precursor cells. It has been shown that glycophorin acts as the receptor for Sandei virus and parvovirus. Glycophorins A (GPA) and B (GPB), which are single, trans-membrane sialoglycoproteins. GPA is the carrier of blood group M and N specificities, while GPB accounts for S and U specificities. GPA and GPB provide the cells with a large mucin like surface and it has been suggested this provides a barrier to cell fusion, so minimizing aggregation between red blood cells in the circulation.

Product Info

| | |
|----------------------------|---|
| Amount : | 100 µg |
| Purification : | Affinity Chromatography |
| Content : | 100 µg in 500 µl PBS containing 0.05% BSA and 0.05% sodium azide. Sodium azide is highly toxic. |
| Storage condition : | Store the antibody at 4°C; stable for 6 months. For long-term storage; store at -20°C. Avoid repeated freeze and thaw cycles. |

Application Note

Western Blot (1-2ug/ml); Immunohistochemistry (Formalin-fixed) (1-2ug/ml for 30 minutes at RT)(Staining of formalin-fixed tissues requires heating tissue sections in 10mM Tris with 1mM EDTA, pH 9.0, for 45 min at 95°C followed by cooling at RT for 20 minutes);



Formalin-fixed, paraffin-embedded human Placenta stained with Glycophorin A Monoclonal Antibody (SPM599)