

36-1233: Monoclonal Antibody to HLA-DRB (MHC II)(Clone : SPM289)

Clonality :	Monoclonal
Clone Name :	SPM289
Application :	FACS,IF,WB,IHC
Reactivity :	Human
Gene :	HLA-DRB1
Gene ID :	3123
Uniprot ID :	P01911
Format :	Purified
Alternative Name :	HLA-DRB1,HLA-DRB2
Isotype :	Mouse IgG2b, kappa
Immunogen Information :	Activated human peripheral blood mononuclear cells

Description

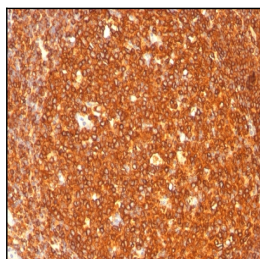
This MAb reacts with the beta-chain of HLA-DR antigen, a member of MHC class II molecules. It does not cross react with HLA-DP and HLA-DQ. The L243 antibody recognizes a different epitope than the SPM289 monoclonal antibody, and these antibodies do not cross-block binding to each other's respective epitopes. HLA-DR is a heterodimeric cell surface glycoprotein comprised of a 36kDa alpha (heavy) chain and a 28kDa beta (light) chain. It is expressed on B-cells, activated T-cells, monocytes/macrophages, dendritic cells and other non-professional APCs. In conjunction with the CD3/TCR complex and CD4 molecules, HLA-DR is critical for efficient peptide presentation to CD4+ T cells. It is an excellent histiocytic marker in paraffin sections producing intense staining. True histiocytic neoplasms are similarly positive. HLA-DR antigens also occur on a variety of epithelial cells and their corresponding neoplastic counterparts.

Product Info

Amount :	100 µg
Purification :	Affinity Chromatography
Content :	100 µg in 500 µl PBS containing 0.05% BSA and 0.05% sodium azide. Sodium azide is highly toxic.
Storage condition :	Store the antibody at 4°C; stable for 6 months. For long-term storage; store at -20°C. Avoid repeated freeze and thaw cycles.

Application Note

Flow Cytometry (1-2ug/million cells); Immunofluorescence (2-4ug/ml); Western Blot (1-2ug/ml); Immunohistochemistry (Formalin-fixed) (1-2ug/ml for 30 minutes at RT)(Staining of formalin-fixed tissues requires heating tissue sections in 10mM Tris with 1mM EDTA, pH 9.0, for 45 min at 95°C followed by cooling at RT for 20 minutes);



Formalin-fixed, paraffin-embedded human Tonsil stained with HLA-DRB Monoclonal Antibody (SPM289).