

Immunology

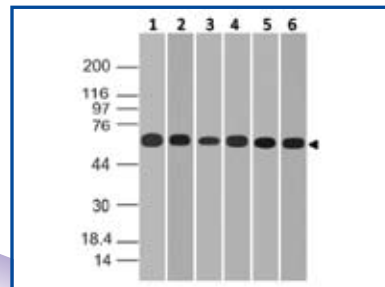
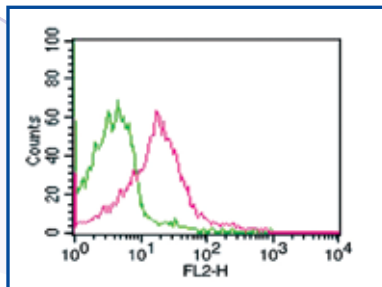
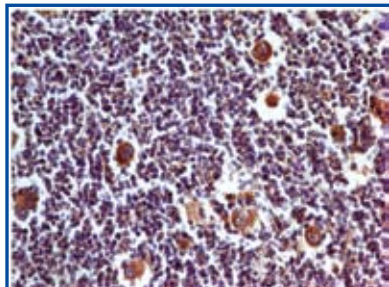
Monoclonal Antibody to PD-L1

Product Code : 10-7562

Clone Name : ABM4E54

Application : IHC, FACS, WB

Reactivity : Human



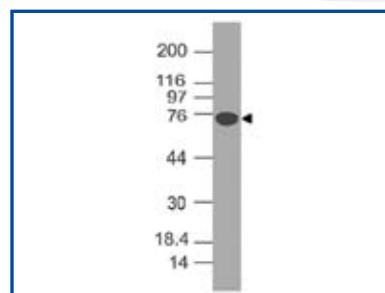
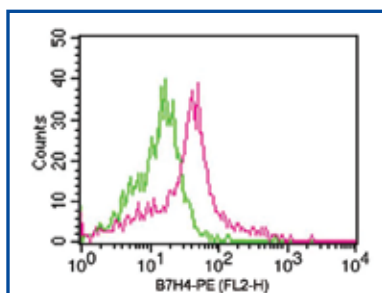
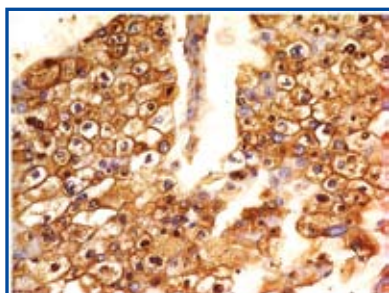
Monoclonal antibody to B7-H4

Product Code : 10-4172

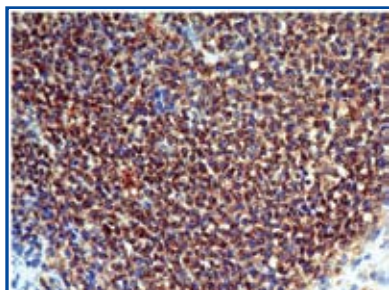
Clone Name : ABM53A6

Application : IHC, FACS, WB

Reactivity : Human



Monoclonal Antibody to CD137



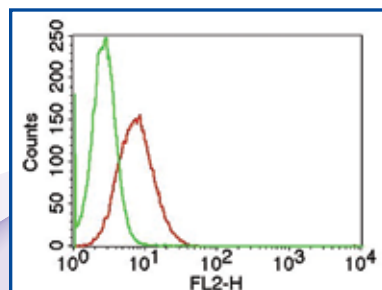
Product Code : 10-7620

Clone Name : ABM3D3.2E8

Application : IHC, WB

Reactivity : Human

Monoclonal Antibody to IL-17A



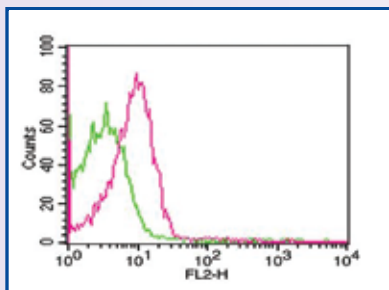
Product Code : 10-4007

Clone Name : ABM2B14

Application : FACS

Reactivity : Human

Monoclonal Antibody to FOXP3



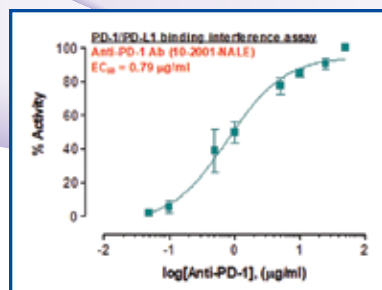
Product Code : 10-4074

Clone Name : 3G3

Application : FACS

Reactivity : Human

Rec. PD-1 rabbit monoclonal Antibody



Product Code : 10-2001

Clone Name : ABMRR01

Application : FA, FACS, WB

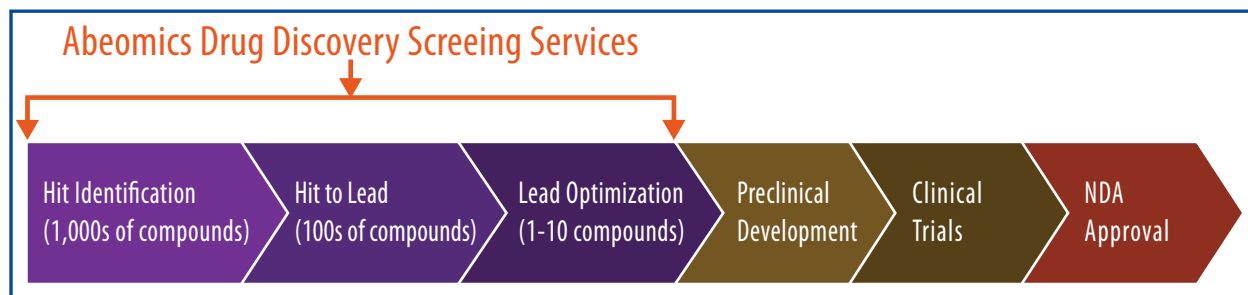
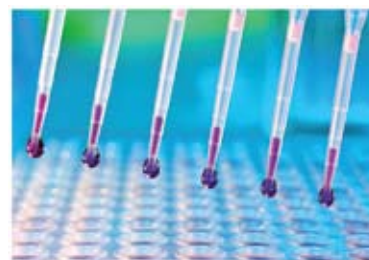
Reactivity : Human

Our technical expertise in development of products for studying cell signaling and molecular mechanisms has allowed us to deliver better assay services to the clients from Biotech and Pharmaceutical companies as well as Academic Institutes in need of assay development and evaluation of compounds by a variety of protocols - Target Reporter Assay, Protein Array Assay, Cytotoxicity Assay, Western Blotting, Flow Cytometry and ELISA.

Drug discovery and development requires in-depth knowledge in targeted areas of biology, and experience in utilization of specific experimental platforms. Consider Abeomics as an extension of your team.

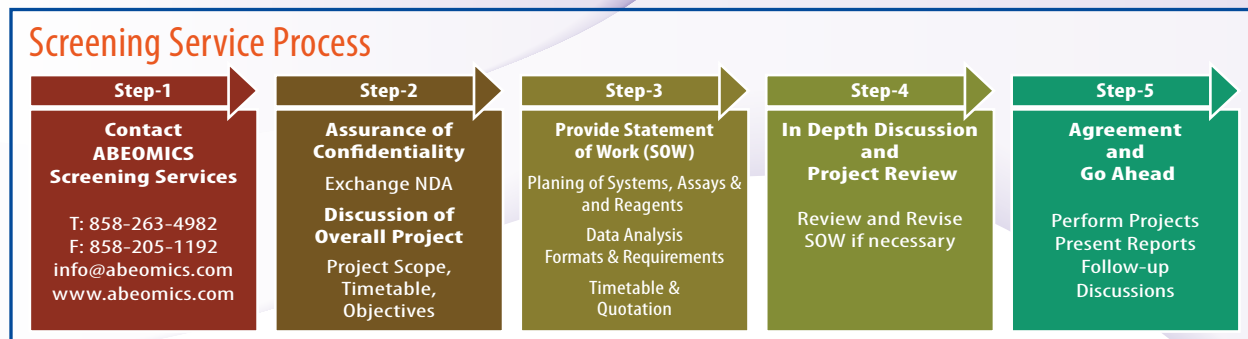
Assay Development:

Speak with us about your needs to develop and optimize dedicated cell-based and immunologic assay for your discovery programs.



Compound Screening:

We specialize in relevant methodologies including Luciferase assays to identify active compounds that modulate a particular biomolecular pathway, such as Th17, NF-κB, T regulatory pathways, etc.



Product Categories

- Antibodies
- Isotype Controls
- Reporter Cell Lines
- ELISA Kits
- Recombinant Proteins
- Flowcytometry Staining Kits



**Releasing Soon
CAR-T
Reagents**

Contact Us

9853 Pacific Heights Blvd. Suite D.
San Diego, CA 92121 USA
Tel: +1-858-263-4982 | Fax: +1-858-247-7052
Email: support@abeomics.com
www.abeomics.com

☎ +1-858-263-4982

✉ support@abeomics.com